

# UNIVERSIDAD DE CONCEPCIÓN



## CENTRO DE INVESTIGACIÓN EN INGENIERÍA MATEMÁTICA (CI<sup>2</sup>MA)



**A stabilized finite volume element method for  
sedimentation-consolidation processes**

RAIMUND BÜRGER, RICARDO RUIZ-BAIER,  
HECTOR TORRES

PREPRINT 2011-15

### SERIE DE PRE-PUBLICACIONES



# A STABILIZED FINITE VOLUME ELEMENT METHOD FOR SEDIMENTATION-CONSOLIDATION PROCESSES

RAIMUND BÜRGER\*, RICARDO RUIZ-BAIER†, AND HÉCTOR TORRES‡

**Abstract.** A model of sedimentation-consolidation processes in so-called clarifier-thickener units is given by a parabolic equation describing the evolution of the local solids concentration coupled with a version of the Stokes system for an incompressible fluid describing the motion of the mixture. In cylindrical coordinates, and if an axially symmetric solution is assumed, the original problem reduces to two space dimensions. This poses the difficulty that the subspaces for the construction of a numerical scheme involve weighted Sobolev spaces. A novel finite volume element method is introduced for the spatial discretization, where the velocity field and the solids concentration are discretized on two different dual meshes. The method is based on a stabilized discontinuous Galerkin formulation for the concentration field, and a multiscale stabilized pair of  $\mathbb{P}_1$ - $\mathbb{P}_1$  elements for velocity and pressure, respectively. Numerical experiments illustrate properties of the model and the satisfactory performance of the proposed method.

**Key words.** Finite volume element method, axisymmetric formulation, sedimentation process, clarifier-thickener units.

**AMS subject classifications.** 65M60, 65M08, 35Q35, 76D07.

## 1. Introduction.

**1.1. Scope.** The sedimentation of a suspension of small solid particles dispersed in a viscous fluid under the influence of gravity is a well-studied phenomenon and a fundamental unit operation in industrial applications and wastewater treatment. In many situations, the solid particles are flocculated artificially or naturally and form sediment layers that undergo consolidation. The modeling and simulation of the resulting sedimentation-consolidation process, and density-driven flows in general, requires the solution of a transport-flow problem in which a convection (or convection-diffusion) equation for the transport of solids volume fraction is coupled with a version of the Stokes, Navier-Stokes, or Darcy equations describing the flow of the mixture. Solving these problems numerically both accurately and efficiently is difficult due to the combination of strong nonlinearities with the strong coupling between the field equations and the incompressibility constraint.

The physical principles of sedimentation-consolidation processes, corresponding mathematical models, and some numerical tools for their simulation in one or two space dimensions under simplifying assumptions, can be found, e.g., in [8, 9, 12] (see also [15, 51, 52]). The governing partial differential equations can be written as follows:

$$\partial_t \phi + \nabla \cdot \mathbf{F}(\phi, \mathbf{u}) = \Delta A(\phi), \quad (1.1a)$$

$$-\nabla \cdot (\mu(\phi) \varepsilon(\mathbf{u}) - \lambda p \mathbf{I}) = \mathbf{G}(\phi), \quad (1.1b)$$

$$\lambda \nabla \cdot \mathbf{u} = 0, \quad \text{in } \tilde{\Omega}, t > 0. \quad (1.1c)$$

---

\*CI<sup>2</sup>MA and Departamento de Ingeniería Matemática, Universidad de Concepción, Casilla 160-C, Concepción, Chile ([rburger@ing-mat.udec.cl](mailto:rburger@ing-mat.udec.cl)).

†CMCS-MATHICSE-SB, École Polytechnique Fédérale de Lausanne, CH-1015 Lausanne, Switzerland ([ricardo.ruiz@epfl.ch](mailto:ricardo.ruiz@epfl.ch)).

‡Departamento de Matemáticas, Facultad de Ciencias, Universidad de La Serena, Av. Cisternas 1200, La Serena, Chile ([htorres@ing-mat.udec.cl](mailto:htorres@ing-mat.udec.cl)).

Here  $\tilde{\Omega} \subset \mathbb{R}^3$  is a given spatial domain, and  $t$  is time. The sought quantities are the local solids concentration  $\phi$ , the local volume-average velocity of the mixture  $\mathbf{u}$ , and the pressure  $p$ . Furthermore,  $\mathbf{F}$  is a flux vector which is linear in  $\mathbf{u}$  but nonlinear in  $\phi$ ,  $A$  is a nonlinear, non-decreasing diffusion function modeling sediment compressibility,  $\mu(\phi)\boldsymbol{\varepsilon}(\mathbf{u}) - \lambda p \mathbf{I}$  is the Cauchy stress tensor, where  $\boldsymbol{\varepsilon}(\mathbf{u}) := \frac{1}{2}(\nabla \mathbf{u} + \nabla \mathbf{u}^T)$ ,  $\lambda$  is a given coefficient,  $\mu$  is a concentration-dependent viscosity function, and  $\mathbf{G}$  is a forcing term modeling that local density fluctuations drive the motion of the mixture. The coupling of the Stokes system (1.1b), (1.1c) with the convection-diffusion equation (1.1a) induces several problems. Firstly, at the discrete level, the convection-dominated nature of the problem results in failure of standard Galerkin approximations. Secondly, the method for the coupled problem also needs to include inf-sup stable discretizations for the Stokes system and at the same time guarantee (at least locally) conservation of mass. From a general mathematical perspective, the analysis of (1.1) faces other difficulties including degeneracy where  $A$  is flat, the possible need of introducing entropy conditions, and strong assumptions on the boundedness of the coupling terms.

The system (1.1) will be considered in an axisymmetric domain in two space dimensions along with initial and boundary conditions. This configuration represents widely used equipment in applications such as clarifier-thickeners in mineral processing or secondary settling tanks in wastewater treatment, and avoids an excessive number of degrees of freedom, as would be required for a fully three-dimensional flow problem.

It is the purpose of this paper to develop, implement and test a numerical scheme for (1.1). In our proposed approach, the resulting system is discretized in time by a semi-implicit backward Euler method, and in space by a suitable finite volume element (FVE) method whose main novelty lies in the formulation of a unified scheme for a coupled problem, while several FVE methods have been proposed for Stokes and quasilinear scalar elliptic problems only, see e.g. [6, 16, 45, 54]. Besides the finite element primal mesh, we introduce two additional meshes on which we discretize velocity and solids fraction by continuous and discontinuous piecewise linear elements, respectively. Moreover, since the problem is defined in an axisymmetric setting, we need to employ weighted Sobolev spaces at both continuous and discrete levels.

**1.2. Related work.** An important amount of literature is devoted to the determination of exact and numerical solutions of model (1.1) in the one-dimensional case [4, 9, 10, 12, 22, 23, 24, 25, 53] (this list is far from being complete). In that setting, only the equation for the concentration (1.1a) needs to be solved, while the mixture flow velocity is determined by boundary conditions. Only a limited number of papers including [11, 33, 35, 38, 46] deal with the numerical study of sedimentation-consolidation models in two or three space dimensions.

Fast and reliable numerical methods for related problems in two and three space dimensions include stable finite element (FE) methods [35, 46], discontinuous Galerkin methods [19], finite volume (FV) formulations [4, 11], finite difference schemes [40, 44], and hybrid/combined finite volume–finite element methods [17, 20, 26, 31, 43]. The particular concept of FVE methods (see [16]) is intermediate between finite volumes and finite elements. The ability of the numerical scheme to be locally conservative (as that of classical FV methods) while allowing for the deduction of  $L^2$  estimates in a rather natural way (as for classical finite elements) is one of the most appealing features of FVE methods. In fact, the principle behind FVE methods is as follows. A Petrov-Galerkin type of discretization of the underlying problem is obtained, in which the test and trial functional spaces associated to the finite-dimensional problem do not originally coincide. With the aid of a transfer map, the test space is transformed

to match the trial space. In this approach we further propose to use two different transfer maps, which will allow us to project discrete functions defined in standard FE spaces associated to nodes and elements in a given primal mesh into different spaces associated to a dual and a diamond mesh. Using some properties of these transfer operators, the resulting FVE scheme adopts a form similar to the original Petrov-Galerkin formulation, which in our case corresponds to an edge-based stabilized method. The solution of the coupled transport-flow problem is then obtained by this final scheme.

In consonance with FE formulations for Navier-Stokes problems, to avoid spurious oscillations in the pressure approximation, inf-sup stable spaces are needed for the velocity-pressure pair. Among the possible discretizations of these variables, we restrict ourselves to continuous piecewise bilinear elements enriched with local functions for velocity ( $\mathbf{u}$ ), and continuous piecewise linear elements for the pressure ( $p$ ) field (as in the multiscale stabilized method of [2, 45]), whereas discontinuous piecewise linear elements are chosen for the approximation of the concentration ( $\phi$ ) field. In a diffusion-dominated regime, classical piecewise linear finite elements represent the most appropriate choice for the approximation of  $\phi$ . However, for convection-dominated problems, particular care must be taken to avoid nonphysical oscillations in  $\phi$ , which are likely to occur since solutions of degenerate parabolic equations, which include first-order hyperbolic conservation laws, exhibit sharp fronts and even shock discontinuities, which need to be resolved accurately. Such behavior motivates the use of discontinuous Galerkin elements for  $\phi$ . In that approach, no continuity across the inter-element boundaries is required for the approximation functions. However a connection between neighboring elements is enforced via a penalty term. Other possible approaches include the so-called monotone schemes such as upwind procedures [49] or streamline upwind Petrov-Galerkin methods [30].

Contributions more closely related to the present paper include the work of Guardone and Vigeveno [32], who present a “node-pair” FE method and make the link with the FV approximation for axially symmetric scalar conservation laws. Kleine and Reddy [35] study different geometries for settling tanks using a FE method, while Calgaro et al. [17] couple Taylor-Hood finite elements for the flow equations with finite volumes for a conservation law.

The reduction of 3D problems to axisymmetric ones is addressed in the early work by Mercier and Raugel [39] (for Poisson problems), and by Belhachmi et al. [3] and Carneiro de Araujo and Ruas [18] for the Stokes equations in the primitive variables and the three-field formulation, respectively.

Models similar to (1.1) also arise in other applications, including so-called time-dependent natural convection flows, in which the Navier-Stokes equations are coupled with a transport equation for temperature [21], thermal convection flows [50], the melting of glaciers [34], aluminum production [28], petroleum reservoir engineering [47], and nuclear waste contamination [20]. The present numerical method should therefore be of interest in these applications.

**1.3. Outline of the paper.** The remainder of this paper is organized as follows. In Section 2, some preliminaries about notation, and the model itself along with its weak formulation and a discussion on its solvability are presented. In Section 3 we derive a FVE method for the numerical approximation of the weak formulation. To this end we first introduce in Section 3.1 the appropriate FE spaces for the approximation of  $\phi$ ,  $\mathbf{u}$  and  $p$  in an axisymmetric setting. Then, in Sections 3.2 and 3.3, we formulate the local semi-discrete Galerkin discretizations for the axisymmetric ver-

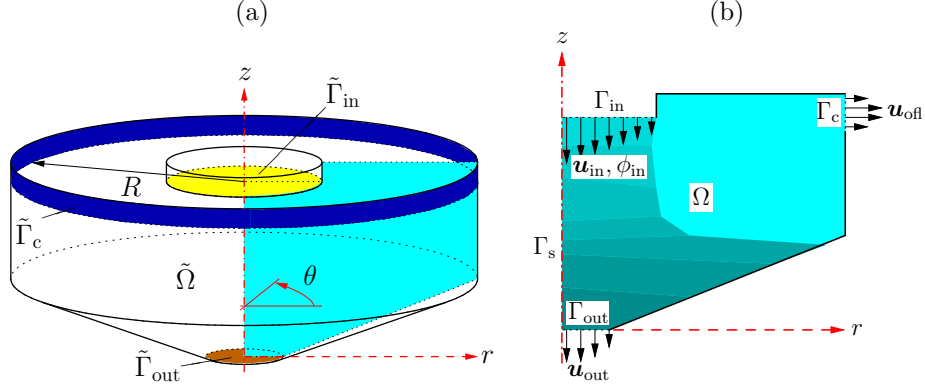


FIG. 2.1. (a) Sketch of a three-dimensional simplified clarifier-thickener unit  $\tilde{\Omega}$ . Here  $z$  represents a symmetry axis. The disks  $\tilde{\Gamma}_{\text{in}}$  and  $\tilde{\Gamma}_{\text{out}}$  and the cylindrical strip  $\tilde{\Gamma}_{\text{c}}$  are the respective inflow, underflow, and overflow portions of the boundary  $\partial\tilde{\Omega}$  of  $\tilde{\Omega}$ . (b) Schematic view of the axisymmetric domain  $\Omega$ . The boundary  $\Gamma_{\text{s}}$  represents the symmetry axis  $r = 0$ ,  $\Gamma_{\text{in}}$  is the inflow,  $\Gamma_{\text{out}}$  the underflow, and  $\Gamma_{\text{c}}$  is the overflow boundary. In real-world applications, the bottom is of conical shape (as shown here) for the ease of discharging sediment through the underflow opening, and the material (usually, clear liquid) leaving through the overflow is collected in a circumferential open channel (not modeled or depicted here).

sions of the convection-diffusion equation (1.1a) and the Stokes system (1.1b), (1.1c), respectively. After summarizing (in Sect. 3.4) the Galerkin FE formulation for the coupled problem we proceed in Section 3.5 to the formulation of the finite volume element (FVE) method for the coupled problem. Finally, Section 4 provides several numerical experiments to illustrate the performance of the method and the applicability of the model, and we close in Section 5 with some conclusions and comments on current extensions.

## 2. Preliminaries and statement of the problem.

**2.1. Notation.** Let  $\mathcal{R}$  denote an open, bounded and connected subset of  $\mathbb{R}^d$ ,  $d = 2, 3$ , with a piecewise smooth boundary  $\partial\mathcal{R}$ . We use standard notation for Lebesgue spaces  $L^p(\mathcal{R})$ ,  $1 \leq p \leq \infty$ ,  $L_0^2(\mathcal{R}) = \{v \in L^2(\mathcal{R}) : \int_{\mathcal{R}} v \, d\mathbf{x} = 0\}$ , and Sobolev functional spaces  $H^m(\mathcal{R})$ ,  $m \geq 0$ . In particular  $L^2(R) = H^0(R)$ . We also write  $H_0^1(\mathcal{R}) = \{v \in H^1(\mathcal{R}) : v = 0 \text{ on } \partial\mathcal{R}\}$ , and by  $\mathbf{n}$  we denote the outward normal vector to  $\partial\mathcal{R}$ . For  $T > 0$ , standard Bochner spaces are denoted by  $L^p(0, T; H^m(\mathcal{R}))$ . To distinguish between scalar and vector functions, we will use boldface symbols for vector functions. Similarly, a function space written in boldface denotes the vector analogue of the corresponding scalar space.

**2.2. Axisymmetric formulation.** We are interested in solving (1.1) in a domain  $\tilde{\Omega} \subset \mathbb{R}^3$  which is assumed to be invariant by rotation around a vertical axis (see Figure 2.1 (a)). To this end, we rewrite (1.1) in cylindrical coordinates  $(r, \theta, z)$ . Furthermore,  $\Omega$  denotes the half cross section defined by  $(r, 0, z)$  (see Figure 2.1 (b)), on which we want to solve the problem. Since an axisymmetric scalar function  $\tilde{s}$  defined on  $\tilde{\Omega}$  depends only on  $r$  and  $z$ , it is possible to associate to  $\tilde{s}$  a function  $s$  defined on  $\Omega$  such that  $s(r, z) = \tilde{s}(r, 0, z)$ . If a vector field  $\tilde{\mathbf{v}}$  defined on  $\tilde{\Omega}$  has zero angular component, then a vector field  $\mathbf{v} = (v_r, v_z)$  can be associated to it such that  $\tilde{v}_r = v_r$ , and  $\tilde{v}_z = v_z$ . This assumption corresponds to a so-called non-swirling flow regime. In

this context, the operators  $\nabla_{\mathbf{a}}$ ,  $\nabla_{\mathbf{a}} \cdot$ , and the tensor  $\boldsymbol{\varepsilon}_{\mathbf{a}}$  are defined by

$$\nabla_{\mathbf{a}} \mathbf{v} := \begin{bmatrix} \partial_r v_r & \partial_r v_z \\ \partial_z v_r & \partial_z v_z \end{bmatrix}, \quad \nabla_{\mathbf{a}} \cdot \mathbf{v} := \partial_z v_z + \frac{1}{r} \partial_r (r v_r), \quad \boldsymbol{\varepsilon}_{\mathbf{a}}(\mathbf{v}) := \frac{1}{2} (\nabla_{\mathbf{a}} \mathbf{v} + \nabla_{\mathbf{a}} \mathbf{v}^T),$$

and for a scalar field  $s$  we write  $\nabla_{\mathbf{a}} s = (\partial_r s, \partial_z s)^T$  and  $\Delta_{\mathbf{a}} s = r^{-1} \partial_r (r \partial_r s) + \partial_z^2 s$ . Then, the non-dimensional governing equations read

$$\partial_t \phi + \nabla_{\mathbf{a}} \cdot \mathbf{F}(\phi, \mathbf{u}) = \Delta_{\mathbf{a}}(A(\phi)) \quad \text{in } \Omega, \quad t > 0, \quad (2.1)$$

$$-\nabla_{\mathbf{a}} \cdot (\mu(\phi) \boldsymbol{\varepsilon}_{\mathbf{a}}(\mathbf{u})) + \lambda \nabla_{\mathbf{a}} p = \mathbf{G}(\phi) \quad \text{in } \Omega, \quad (2.2)$$

$$\lambda \nabla_{\mathbf{a}} \cdot \mathbf{u} = 0 \quad \text{in } \Omega. \quad (2.3)$$

As pointed out in [5, 18], to ensure that the model obtained by rewriting the original problem as (2.1)–(2.3) is consistent, we need to suppose axisymmetry not only of the domain, but also of *the relevant phenomenon* to study. This means, in particular, that the flow spreads radially through the domain  $\tilde{\Omega}$ .

The field variables are the local volume fraction of solids (in short, concentration)  $\phi = \phi(r, z, t) > 0$ , the volume average flow velocity of the mixture (in short, velocity)  $\mathbf{u} = \mathbf{u}(r, z) \in \mathbb{R}^2$ , and the total pressure  $p = p(r, z) \in \mathbb{R}$ . Clearly,  $\mathbf{u}$  and  $p$  also depend on time, but we drop this explicit dependence to emphasize that the same Stokes problem (2.2), (2.3) is solved for each  $t > 0$ . As usual, (2.3) implies that the bulk suspension is regarded as an incompressible fluid.

**2.3. Flux vector, diffusion term, viscosity and body force.** The flux vector in (2.1) is given by  $\mathbf{F}(\phi, \mathbf{u}) = \phi \mathbf{u} + f_{\text{bk}}(\phi) \mathbf{k}$  (cf. [12]), where  $\mathbf{k}$  is the unit vector pointing in the direction of gravity, and  $f_{\text{bk}}$  is the Kynch batch flux density function [36] describing hindered settling. This function is assumed to satisfy  $f_{\text{bk}}(0) = f_{\text{bk}}(\phi_{\text{max}}) = 0$  and  $f_{\text{bk}}(\phi) > 0$  for  $0 < \phi < \phi_{\text{max}}$ , where  $0 < \phi_{\text{max}} \leq 1$  is a maximum concentration. Specifically, we choose here the expression [42]

$$f_{\text{bk}}(\phi) = \begin{cases} u_{\infty} \phi (1 - \phi / \phi_{\text{max}})^{n_{\text{MB}}} & \text{for } 0 < \phi < \phi_{\text{max}}, \\ 0 & \text{otherwise,} \end{cases} \quad n_{\text{MB}} \geq 1,$$

where  $u_{\infty} > 0$  is the settling velocity of a single particle in an unbounded fluid, and we choose the exponent  $n_{\text{MB}} = 2$ .

The term  $\Delta A(\phi)$  models sediment compressibility, where the integrated diffusion function  $A$  is given by

$$A(\phi) = \int_0^{\phi} a(s) ds, \quad \text{where} \quad a(\phi) := \frac{f_{\text{bk}}(\phi) \sigma'_e(\phi)}{(\varrho_s - \varrho_f) g \phi}.$$

Here  $\varrho_s$  and  $\varrho_f$  are the solid and fluid mass densities, respectively,  $g$  is the acceleration of gravity, and  $\sigma'_e$  is the derivative of effective solid stress function,  $\sigma_e$ , which is here assumed to satisfy

$$\sigma'_e(0) = 0, \quad \sigma'_e(\phi) > 0 \quad \text{for } \phi > 0. \quad (2.4)$$

Since  $a(0) = a(\phi_{\text{max}}) = 0$  and  $a(\phi) > 0$  for  $0 < \phi < \phi_{\text{max}}$ , (2.1) is a two-point degenerate parabolic PDE, which degenerates into a first-order hyperbolic conservation law for  $\phi = 0$  and  $\phi = \phi_{\text{max}}$ . The assumption (2.4) allows us to write

$$\Delta_{\mathbf{a}}(A(\phi)) = \nabla_{\mathbf{a}} \cdot (a(\phi) \nabla_{\mathbf{a}} \phi) \quad \text{for } \phi \in (0, 1],$$

which is a useful asset in developing the numerical method.

**REMARK 2.1.** *It is frequently assumed that  $\sigma'_e(\phi) = 0$  not only for  $\phi = 0$ , but for  $0 \leq \phi \leq \phi_c$ , where  $0 < \phi_c < \phi_{\max}$  is a critical concentration. In that case, (2.1) is strongly degenerate, and the well-posedness of this equation requires an entropy solution concept. Even though the development of our method is based on two-point degeneracy, numerical experiments demonstrate that it handles the strongly degenerate case as well, see Section 4.3.*

The forcing term  $\mathbf{G}(\phi)$  in (2.2) models that the mixture flow is driven by local fluctuations of  $\phi$ , and therefore of the density of the mixture, besides the inflow and discharge boundary conditions. More specifically, we put  $\mathbf{G}(\phi) = -\lambda\phi g\mathbf{k}$ .

Finally,  $\mu(\phi)$  denotes a generalized local concentration-dependent Newtonian viscosity function, where we assume that there exist constants  $\mu_{\min}, \mu_{\max} > 0$  such that

$$\mu_{\min} < \mu(s) < \mu_{\max} \quad \text{for } s \in \mathbb{R}_+. \quad (2.5)$$

A suitable choice is  $\mu(\phi) = (1 - \phi/\tilde{\phi}_{\max})^{-\beta}$  [41], where the parameter  $\tilde{\phi}_{\max}$  is a second (nominal) maximum concentration. If we set  $\tilde{\phi}_{\max} > \phi_{\max}$  then (2.5) is indeed valid.

**2.4. Initial and boundary conditions.** We are interested in solving (2.1)–(2.3) for  $t \in [0, T]$  in the spatial domain  $\Omega$ , which represents the axially symmetric cross section of the clarifier-thickener unit (see Figure 2.1 (b)). The model is complemented by initial data for the concentration  $\phi$  and the velocity  $\mathbf{u}$ , and boundary conditions as follows. The vessel is continuously fed through the inflow boundary  $\Gamma_{\text{in}}$  with feed suspension, which corresponds to a constant profile for the velocity  $\mathbf{u}_{\text{in}}$ , and a constant concentration  $\phi_{\text{in}}$  for the feed suspension. On  $\Gamma_{\text{out}}$ , the prescribed volume underflow velocity  $\mathbf{u}_{\text{out}}$ , at which the thickened sediment is removed from the unit, is a constant profile as well. The values of  $\phi$  on  $\Gamma_{\text{out}}$  and  $\Gamma_c$  are not prescribed since they are part of the solution. On the symmetry axis (interior of the intersection of the whole boundary with the axis represented by  $r = 0$ ) denoted by  $\Gamma_s$ , we impose zero velocity in its perpendicular direction. Moreover, as usual, one assumes that the flux component normal to the symmetry axis vanishes:

$$\int_{\Gamma_s} (\mathbf{F}(\phi, \mathbf{u}) - a(\phi)\nabla_{\mathbf{a}}\phi) \cdot \mathbf{n} r \, d\sigma = 0.$$

This condition is automatically satisfied here since  $r = 0$  on  $\Gamma_s$ . Finally, on the remaining part of  $\partial\Omega$  we specify no-slip boundary conditions for the velocity field ( $\mathbf{u} = \mathbf{0}$ ), and zero-flux boundary data for the concentration.

**2.5. Weak solutions.** To derive a weak form of (2.1)–(2.3), we recall the definitions of some weighted Lebesgue and Sobolev spaces (see e.g. [3]). For  $\alpha \in \mathbb{R}$  and  $1 \leq p < \infty$ , let  $L_{\alpha}^p(\Omega)$  denote the space of measurable functions  $v$  on  $\Omega$  such that

$$\|v\|_{L_{\alpha}^p(\Omega)}^p := \int_{\Omega} |v|^p r^{\alpha} \, dr \, dz \leq \infty.$$

Obviously, for  $p = \infty$ ,  $L_{\alpha}^{\infty}(\Omega)$  coincides with  $L^{\infty}(\Omega)$ . We also use the space

$$L_{1,0}^2(\Omega) := \left\{ q \in L_1^2(\Omega) : \int_{\Omega} q r \, dr \, dz = 0 \right\}.$$

The scalar product in  $L_{\alpha}^2(\Omega)$  is denoted by  $(\cdot, \cdot)_{\alpha, \Omega}$ . Moreover,  $H_{\alpha}^m(\Omega)$  is the space of functions in  $L_{\alpha}^p(\Omega)$  whose derivatives up to order  $m$  are also in  $L_{\alpha}^p(\Omega)$ , and we



denote by  $H_{\alpha, \Gamma_D}^m(\Omega)$  its restriction to functions with null trace on a generic part of the boundary  $\Gamma_D \subset \partial\Omega$ , where Dirichlet conditions are imposed. Finally, we define  $S := H_1^1(\Omega)$ ,  $\mathbf{V} := V_{1, \Gamma_D}^1(\Omega) \times H_{1, \Gamma_D}^1(\Omega)$  and  $Q := L_{1,0}^2(\Omega)$ , and introduce the spaces

$$V_1^1(\Omega) := \{w \in H_1^1(\Omega) : w \in L_{-1}^2(\Omega)\}, \quad V_{1, \Gamma_D}^1(\Omega) := \{w \in V_1^1(\Omega) : w = 0 \text{ on } \Gamma_D\}.$$

The space of axisymmetric vector fields in  $[H^1(\tilde{\Omega})]^3$  with zero angular component is isomorphic to  $V_1^1(\Omega) \times H_1^1(\Omega)$  and the space of axisymmetric vector fields in  $[H_{\Gamma_D}^1(\tilde{\Omega})]^3$  with zero angular component is isomorphic to  $\mathbf{V}$  (see e.g. [3]).

Multiplying (2.1), (2.2) and (2.3) by  $r$  and smooth functions  $s$ ,  $\mathbf{v}$  and  $q$ , respectively, and integrating by parts over  $\Omega$  yields the following weak formulation in the axisymmetric case: For  $0 < t < T$ , find  $(\phi(t), \mathbf{u}, p) \in S \times \mathbf{V} \times Q$  such that

$$\begin{aligned} \int_{\Omega} s(\phi(0) - \phi_0) r \, dr \, dz &= 0 \quad \forall s \in S, \\ \int_{\Omega} s \partial_t \phi r \, dr \, dz - \int_{\Omega} (\mathbf{F}(\phi, \mathbf{u}) - a(\phi) \nabla_{\mathbf{a}} \phi) \cdot \nabla_{\mathbf{a}} s r \, dr \, dz \\ &\quad + \int_{\Gamma_{\text{in}}} r s (\mathbf{F}(\phi, \mathbf{u}) - a(\phi) \nabla_{\mathbf{a}} \phi) \cdot \mathbf{n} \, d\sigma = 0 \quad \forall s \in S, \\ \int_{\Omega} \mu(\phi) \varepsilon_{\mathbf{a}}(\mathbf{u}) : \varepsilon_{\mathbf{a}}(\mathbf{v}) r \, dr \, dz + \int_{\Omega} \frac{1}{r} \mu(\phi) u_r v_r \, dr \, dz \\ &\quad - \lambda \int_{\Omega} p \nabla_{\mathbf{a}} \cdot \mathbf{v} r \, dr \, dz = \int_{\Omega} \mathbf{G}(\phi) \cdot \mathbf{v} r \, dr \, dz \quad \forall \mathbf{v} \in \mathbf{V}, \\ \lambda \int_{\Omega} q \nabla_{\mathbf{a}} \cdot \mathbf{u} r \, dr \, dz &= 0 \quad \forall q \in Q. \end{aligned} \tag{2.6}$$

**LEMMA 2.2.** *Let  $\phi_0 \geq 0$ ,  $\phi_0 \in L^\infty(\Omega)$ , and  $A(s) \in L^2(0, T; (H_1^1(\Omega))')$ . Then, there exists a unique solution to (2.6), satisfying  $\phi \in L^2(0, T; H_1^1(\Omega))$  and  $\partial_t \phi \in L^2(0, T; (H_1^1(\Omega))')$ .*

A proof of Lemma 2.2 can be developed using the following sketch. First, the degeneracy of  $a(\cdot)$  at  $\phi = 0$  is treated by defining an auxiliary system related to the term  $a_\varepsilon(\phi) = a(\phi) + \varepsilon$  with  $\varepsilon > 0$ . We then fix  $\phi = \bar{\phi}$ . The coupling terms  $\mu(\bar{\phi})$  and  $\mathbf{G}(\bar{\phi})$  are then uniformly bounded, which implies that the usual bilinear form associated to the diffusive term in (2.2) is continuous and coercive in  $\mathbf{V}$  intersected with the space of (axisymmetric) divergence-free functions, and hence by the Lax-Milgram lemma, we immediately obtain existence and uniqueness of a solution for  $\mathbf{u}$ . A unique pressure  $p \in Q$  follows from the well-known Babuška-Brezzi condition satisfied for the pair  $\mathbf{V} \times Q$ . As a corollary we obtain that for a fixed  $t > 0$ , the mentioned solution satisfies an estimate of the form  $\|\mathbf{u}\|_{\mathbf{V}} + \|p\|_Q \leq C$ , where  $C$  depends only on  $\|\bar{\phi}\|_S$ ,  $\mu_{\max}$  and  $|\Omega|$ . Next, we fix  $(\mathbf{u}, p) = (\bar{\mathbf{u}}, \bar{p})$  as the unique solution of (2.2), (2.3). The forms of  $a_\varepsilon(\cdot)$  and  $\mathbf{F}(\cdot, \bar{\mathbf{u}})$ , along with a classical result from [37], allow us to state the unique solvability of the auxiliary system related to the quasi-linear problem (2.1) (for a fixed  $(\bar{\mathbf{u}}, \bar{p})$ ). The following step consists in defining the following closed subset of  $L^2(0, T; L_1^2(\Omega))$ :

$$\mathcal{W} := \{s \in L^2(0, T; L_1^2(\Omega)) : 0 \leq \phi(r, z, t) \leq \phi_{\max} \text{ for a.e. } (r, z) \in \Omega, t > 0\},$$

and a map  $\Theta : \mathcal{W} \rightarrow \mathcal{W}$  such that  $\Theta(\bar{\phi}) = \phi$ . Then we can prove continuity and compactness of the operator  $\Theta$ , and by the Schauder fixed-point theorem one concludes that it admits a fixed point. The proof is complete after taking the limit  $\varepsilon \rightarrow 0$ .

### 3. Approximation by finite volume elements.

**3.1. Axisymmetric finite elements setting.** In what follows,  $\mathcal{T}_h$  denotes a locally regular partition of the polygonal domain  $\Omega$  into triangles  $K$  of diameter  $h_K$ , that is, we assume that

$$\exists C > 0 : \quad \forall K \in \mathcal{T}_h : \quad Ch_K^2 \leq |K| \leq h_K^2.$$

The level of refinement of  $\mathcal{T}_h$  is defined by the mesh parameter  $h := \max_{K \in \mathcal{T}_h} \{h_K\}$ , and  $\mathcal{N}_h := \{s_j : j = 1, \dots, N\}$  is the set of nodes of  $\mathcal{T}_h$ . By  $\mathcal{E}_h$  we denote the set of edges or inter-element boundaries of  $\mathcal{T}_h$ , while  $\mathcal{E}_h^{\text{int}}$  will denote the edges of  $\mathcal{T}_h$  that are not part of  $\partial\Omega$ . As usual,  $C$  will denote a generic constant  $C > 0$  that is independent of  $h$ . For simplicity, meshes are kept fixed in time.

By  $S_h$ ,  $\mathbf{V}_h$  and  $Q_h$  we will denote the FE spaces for the approximation of  $\phi$ ,  $\mathbf{u}$  and  $p$ , respectively, which in our setting will be defined as follows:

$$\begin{aligned} S_h &:= \{s \in H_1^1(\Omega) : s|_K \in \mathbb{P}_1(K) \text{ for all } K \in \mathcal{T}_h\}, \\ \mathbf{V}_h &:= \{\mathbf{v} \in \mathbf{V} \cap \mathbf{C}^0(\bar{\Omega}) : \mathbf{v}|_K \in \mathbb{P}_1(K)^2 \text{ for all } K \in \mathcal{T}_h\}, \\ Q_h &:= \{q \in L_{1,0}^2(\Omega) \cap C^0(\bar{\Omega}) : q|_K \in \mathbb{P}_1(K) \text{ for all } K \in \mathcal{T}_h\}. \end{aligned}$$

As usual,  $\mathbb{P}_m(\mathcal{R})$  denotes the space of polynomial functions of total degree  $s \leq m$  defined on the set  $\mathcal{R}$  (in the coordinates  $r$  and  $z$ ). In addition, for a scalar function  $w \in S$ , we let  $\llbracket w \rrbracket_F$  denote its jump, and  $\{w\}_F$  its mean value defined at the edge  $F \in \mathcal{E}_h^{\text{int}}$  separating the neighboring elements  $K^+$  and  $K^-$ . That is,

$$\llbracket w \rrbracket_F := w|_{K^+} - w|_{K^-}, \quad \{w\}_F := \frac{1}{2}(w|_{K^+} + w|_{K^-}).$$

For boundary edges  $F \in \mathcal{E}_h \cap \partial\Omega$ , these definitions simply reduce to

$$\llbracket w \rrbracket_F := \{w\}_F := w|_F.$$

As is well known, the well-posedness of a Galerkin discretization for (2.1)–(2.3) will depend crucially on the choice of the finite-dimensional spaces. In particular, our choice for  $\mathbf{V}_h$  and  $Q_h$  does not satisfy the discrete inf-sup condition: there exists  $\eta > 0$  not depending on  $h$  such that

$$\sup_{\mathbf{v}_h \in \mathbf{V}_h} \frac{\int_{\Omega} \lambda q_h \nabla_{\mathbf{a}} \cdot \mathbf{v}_h \, dr \, dz}{\|\mathbf{v}_h\|_{H_1^1(\Omega)^2}} \geq \eta \|q_h\|_{L_1^2(\Omega)}, \quad q_h \in Q_h,$$

and therefore a stabilization method is needed (see Section 3.3).

**3.2. Local semi-discrete Galerkin discretization of (2.1).** Starting from the weak formulation (2.6) we formulate an associated Galerkin method. First, consider the following local semi-discrete Galerkin problem associated to (2.1) for a given element  $K \in \mathcal{T}_h$ :

$$\begin{aligned} &\frac{d}{dt} \int_K s_h \phi_h(t) r \, dr \, dz - \int_K (\mathbf{F}(\phi_h(t), \mathbf{u}_h) - a(\phi_h(t)) \nabla_{\mathbf{a}} \phi_h(t)) \cdot \nabla_{\mathbf{a}} s_h r \, dr \, dz \\ &+ \int_{\partial K} r s_h (\mathbf{F}(\phi_h(t), \mathbf{u}_h) - a(\phi_h(t)) \nabla_{\mathbf{a}} \phi_h(t)) \cdot \mathbf{n}_K \, d\sigma = 0 \quad \forall s_h \in S_h. \end{aligned}$$

By the choice of the discrete space  $S_h$  we do not impose continuity across inter-element boundaries, and for such a discontinuous representation of functions of  $S_h$ , two values of the unknown  $\phi_h(t)$  exist over a given edge  $F \subset \partial K$ . To handle this situation, the discontinuous boundary flux term is replaced by a continuous numerical flux denoted by  $\widehat{\mathbf{F}}$ , and which corresponds to upwinding for the concentration field, that is,

$$\widehat{\mathbf{F}}(\phi_h(t), \mathbf{u}_h) = \begin{cases} \mathbf{F}(\phi_h^{\text{up}}(t), \mathbf{u}_h) & \text{if } F \in \mathcal{E}_h^{\text{int}}, \\ \mathbf{F}(\phi_{\text{in}}, \mathbf{u}_h) & \text{if } F \subset \Gamma_{\text{in}}, \\ \mathbf{F}(\phi_h(t), \mathbf{u}_h) & \text{otherwise,} \end{cases} \quad \phi^{\text{up}}|_F := \begin{cases} \phi|_{K^+} & \text{if } \mathbf{u} \cdot \mathbf{n}_F \geq 0, \\ \phi|_{K^-} & \text{otherwise,} \end{cases}$$

where  $\phi^{\text{up}}|_F$  is the upwind value of  $\phi$  at the edge  $F$  separating the elements  $K^+$  and  $K^-$ . In the context of discontinuous Galerkin methods,  $\phi^{\text{up}}|_F$  is also referred to as the inflow boundary value. Applying a general stabilization procedure in which the additional terms are similar to those in [14, 27], we arrive at the following local problem for the approximation of (2.1):

$$\begin{aligned} & \frac{d}{dt} \int_K s_h \phi_h(t) r \, dr \, dz - \int_K (\mathbf{F}(\phi_h(t), \mathbf{u}_h) - a(\phi_h(t)) \nabla_{\mathbf{a}} \phi_h(t)) \cdot \nabla_{\mathbf{a}} s_h r \, dr \, dz \\ & + \sum_{F \subset \partial K \setminus \Gamma_{\text{in}}} \int_F \left( \widehat{\mathbf{F}}(\phi_h(t), \mathbf{u}_h) \cdot \mathbf{n}_F - \{a(\phi_h(t)) \nabla_{\mathbf{a}} \phi_h(t) \cdot \mathbf{n}_F\}_F \right) \llbracket s_h \rrbracket_F r \, d\sigma \\ & + \sum_{F \subset \partial K \setminus \Gamma_{\text{in}}} \int_F \left( \frac{\kappa_F^\phi}{h_F^2} \llbracket s_h \rrbracket_F - \eta \{a(\phi_h(t)) \nabla_{\mathbf{a}} s_h \cdot \mathbf{n}_F\}_F \right) \llbracket \phi_h(t) \rrbracket_F r \, d\sigma \\ & = \sum_{F \subset \partial K \cap \Gamma_{\text{in}}} \int_F \left( \frac{\kappa_F^\phi}{h_F^2} s_h - \eta a(\phi_h(t)) \nabla_{\mathbf{a}} s_h \cdot \mathbf{n}_F \right) \phi_{\text{in}} r \, d\sigma \quad \forall s_h \in S_h. \end{aligned}$$

Here  $h_F$  stands for the one-dimensional measure of  $F$ ,  $\kappa_F^\phi$  is a stabilization parameter (constant along  $F$ ) for the concentration field, to be adjusted appropriately, and the parameter  $\eta$  assumes the values 0, 1,  $-1$  for the incomplete, symmetric, and non-symmetric interior penalty Galerkin methods, respectively. Edge-based discretizations of this type help enforcing the global mass conservation property (see [14]).

**3.3. Local semi-discrete Galerkin discretization of (2.2), (2.3).** The discretization of (2.2), (2.3) follows the lines of [45] in the context of the well-known variational multiscale methods [2, 29, 30]. In short, the trial functional space for  $\mathbf{u}$  is enriched with a space of functions that do not vanish on the element boundaries, and which are split into a bubble part and a harmonic extension of the local boundary condition. After a static condensation procedure, the enriched part is completely identified, and so the original discrete problem can be recast in terms of classical piecewise linear elements for both velocity and pressure. The local approximation of (2.2), (2.3) on a given element  $K \in \mathcal{T}_h$  is given by the following system:

$$\begin{aligned} & \int_K \left( r \mu(\phi_h(t)) \varepsilon_{\mathbf{a}}(\mathbf{u}_h) : \varepsilon_{\mathbf{a}}(\mathbf{v}_h) + \frac{\mu(\phi_h(t))}{r} u_{h,r} v_{h,r} \right. \\ & \quad \left. - r \lambda p_h \nabla_{\mathbf{a}} \cdot \mathbf{v}_h - \mathbf{G}(\phi_h(t)) \cdot \mathbf{v}_h r \right) dr \, dz \\ & + \sum_{F \subset \partial K} \frac{h_F}{\kappa_F} \int_F \llbracket \mu(\phi_h(t)) \partial_{\mathbf{n}_F} \mathbf{u}_h \rrbracket_F \llbracket \mu(\phi_h(t)) \partial_{\mathbf{n}_F} \mathbf{v}_h \rrbracket_F r \, d\sigma = 0 \quad \forall \mathbf{v}_h \in \mathbf{V}_h(K), \end{aligned}$$

$$\int_K \lambda r q_h \nabla_{\mathbf{a}} \cdot \mathbf{u}_h - \frac{h_K^2}{\kappa_K^p} (\mathbf{G}(\phi_h(t)) - \lambda \nabla_{\mathbf{a}} p_h) \cdot \nabla_{\mathbf{a}} q_h r \, dr \, dz = 0 \quad \forall q_h \in Q_h(K),$$

where the stabilization parameters are chosen as  $\kappa_F^u = \mu_{\max}$  and  $\kappa_K^p = 2\mu_{\max}$ , and  $w_{h,r}$  denotes the  $r$ -component of any discrete function  $\mathbf{w}_h$ .

**3.4. Galerkin FE formulation for the coupled problem.** Summarizing, we may state the proposed Galerkin FE formulation associated to the weak formulation (2.6) of the coupled problem (2.1)–(2.3) as follows. For  $t \in (0, T]$ , find  $(\phi_h(t), \mathbf{u}_h, p_h) \in S_h \times \mathbf{V}_h \times Q_h$  such that

$$\begin{aligned} & \frac{d}{dt} (\phi_h(t), s_h)_{1,\Omega} + (\mathbf{F}(\phi_h(t), \mathbf{u}_h) - a(\phi_h(t)) \nabla_{\mathbf{a}} \phi_h(t), \nabla_{\mathbf{a}} s_h)_{1,\Omega} \\ & + \sum_{F \in \mathcal{E}_h^{\text{int}}} \left( \widehat{\mathbf{F}}(\phi_h(t), \mathbf{u}_h) \cdot \mathbf{n}_F - \{a(\phi_h(t)) \nabla_{\mathbf{a}} \phi_h(t) \cdot \mathbf{n}_F\}_F + \frac{\kappa_F^\phi}{h_F^2} \llbracket \phi_h(t) \rrbracket_F, \llbracket s_h \rrbracket \right)_{1,F} \\ & - \eta \sum_{F \in \mathcal{E}_h^{\text{int}}} \left( \llbracket \phi_h(t) \rrbracket_F, \{a(\phi_h(t)) \nabla_{\mathbf{a}} s_h \cdot \mathbf{n}_F\}_F \right)_{1,F} \\ & - \sum_{F \in \mathcal{E}_h \cap \Gamma_{\text{in}}} \left[ \eta (\phi_{\text{in}}, a(\phi_h(t)) \nabla_{\mathbf{a}} s_h \cdot \mathbf{n}_F)_{1,F} - \left( \frac{\kappa_F^\phi}{h_F^2} \phi_{\text{in}}, s_h \right)_{1,F} \right] = 0 \quad \forall s_h \in S_h, \end{aligned} \quad (3.1)$$

$$\begin{aligned} & (\mu(\phi_h(t)) \varepsilon_{\mathbf{a}}(\mathbf{u}_h), \varepsilon_{\mathbf{a}}(\mathbf{v}_h))_{1,\Omega} + (\mu(\phi_h(t)) u_{h,r}, v_{h,r})_{-1,\Omega} \\ & - \lambda (p_h, \nabla_{\mathbf{a}} \cdot \mathbf{v}_h)_{1,\Omega} - (\mathbf{G}(\phi_h(t)), \mathbf{v}_h)_{1,\Omega} \\ & + \sum_{F \in \mathcal{E}_h^{\text{int}}} \frac{h_F}{\kappa_F^u} (\llbracket \mu(\phi_h(t)) \partial_{\mathbf{n}_F} \mathbf{u}_h \rrbracket_F, \llbracket \mu(\phi_h(t)) \partial_{\mathbf{n}_F} \mathbf{v}_h \rrbracket_F)_{1,F} = 0 \quad \forall \mathbf{v}_h \in \mathbf{V}_h, \end{aligned} \quad (3.2)$$

$$\lambda (q_h, \nabla_{\mathbf{a}} \cdot \mathbf{u}_h)_{1,\Omega} + \sum_{K \in \mathcal{T}_h} \frac{h_K^2}{\kappa_K^p} (\lambda \nabla_{\mathbf{a}} p_h - \mathbf{G}(\phi_h(t)), \nabla_{\mathbf{a}} q_h)_{1,K} = 0 \quad \forall q_h \in Q_h. \quad (3.3)$$

At time  $t = 0$ , the approximate concentration  $\phi_h(0)$  is constructed by taking the  $L^2$ -orthogonal projection of  $\phi_0$  onto  $S_h$ .

**3.5. The finite volume element method.** For the formulation of the FVE counterpart of (3.2), (3.3), we require the so-called *dual partition*  $\mathcal{T}_h^*$  of  $\Omega$ , which is defined based on the primal mesh  $\mathcal{T}_h$  by constructing non-overlapping control volumes  $K_i^*$  surrounding the node  $s_i \in \mathcal{N}_i$  (as sketched in Figure 3.1). The control volumes can be introduced in several different ways, but we stick to barycentric dual meshes. In a given triangle  $K \in \mathcal{T}_h$ , we select its barycenter  $b_K$ , and create segments joining  $b_K$  with the midpoints  $m_F$  of each edge  $F \subset \partial K$ . This operation is performed for all elements in  $K$ , and in this way one control volume  $K_i^*$  will be associated to the vertex  $s_i$ , which is formed by all sub-elements sharing the vertex  $s_i$ .

Since in Section 3.2 we approximate the  $\phi$ -field by discontinuous finite elements, a further mesh is needed for the FVE formulation associated to (3.1). We refer to that mesh as the *diamond* mesh (although it does not correspond exactly to the classical concept of diamond meshes arising in the construction of discrete duality FV methods such as the one in [1]). As we will see later, the diamond mesh will be needed only for the formulation of the FVE scheme, but no longer at the implementation stage, since the terms containing the contributions on  $\mathcal{T}_h'$  are actually lying on the edges of

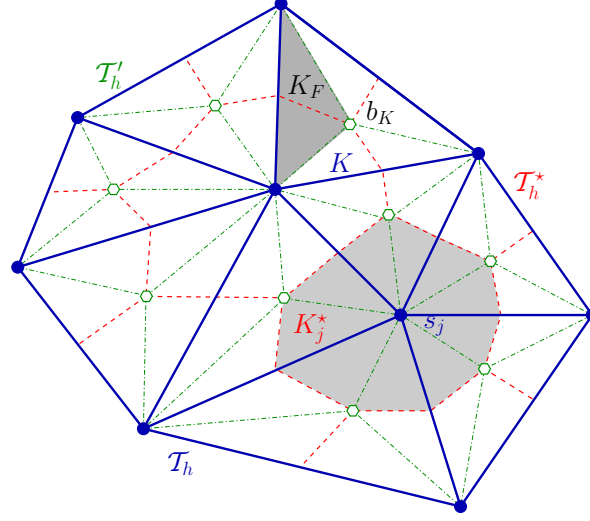


FIG. 3.1. Sketch of triangular elements in the primal mesh  $T_h$ , interior node-centered control volumes of the dual mesh  $T_h^*$  (in dashed lines), and triangular elements of the diamond mesh  $T_h'$  (in dashed-dotted lines). A control volume  $K_j^*$  surrounding a node  $s_j$ , and an element  $K_F$  of the diamond mesh are enhanced.

$T_h$ . The diamond mesh  $T_h'$  is constructed simply by joining the barycenter  $b_K$  of the generic triangle  $K \in T_h$  with the vertices of  $K$ , forming in this way three sub-triangles  $K_F$ , for  $F \subset \partial K$ , for a given  $K \in T_h$ . We now define some finite-dimensional spaces associated to  $T_h^*$  and  $T_h'$ . First, we define

$$\begin{aligned} \mathbf{V}_h^* &:= \{v \in L_1^2(\Omega) : v|_{K_j^*} \in \mathbb{P}_0(K_j^*)^2 \text{ for all } K_j^* \in T_h^*, \\ &\quad v|_{K_j^*} = \mathbf{0} \text{ if } K_j^* \text{ is a boundary volume}\}, \end{aligned}$$

spanned by  $\{\chi_i(1,0), \chi_i(0,1)\}_i$ , where  $\chi_i$  is the characteristic function of the control volume  $K_i^*$ , that is,

$$\chi_i(x) = \begin{cases} 1 & \text{if } x \in K_i^*, \\ 0 & \text{otherwise.} \end{cases}$$

Secondly, we introduce the space

$$S_h' := \{s \in L_1^2(\Omega) : s|_{K_F} \in \mathbb{P}_0(K_F) \text{ for all } K_F \in T_h'\}.$$

Moreover, we introduce the transfer operator  $\mathcal{P} : \mathbf{V}_h \rightarrow \mathbf{V}_h^*$  (cf. [16, 45]) which for all  $\mathbf{v}_h \in \mathbf{V}_h$  is defined as follows. If

$$\mathbf{v}_h(x) = \sum_{i=1}^{N_h} \mathbf{v}_h(s_i) \phi_i(x) \quad \text{for } x \in \Omega,$$

where  $\{\phi_i\}_i$  is a basis of  $\mathbf{V}_h$ , then

$$(\mathcal{P}_h \mathbf{v}_h)(x) = \sum_{i=1}^{N_h} \mathbf{v}_h(s_i) \chi_i(x) \quad \text{for } x \in \Omega.$$

We also define the mapping  $\mathcal{R}_h : S_h \rightarrow S'_h$  by [6, 54]

$$\mathcal{R}_h s_h|_{K_F} = \frac{1}{h_F} \int_F s_h|_{K_F} r \, d\sigma \quad \text{for } s_h \in S_h, K_F \in \mathcal{T}'_h.$$

The discrete problem associated to the variational formulation is obtained by multiplying (2.1) by  $\mathcal{R}_h s_h \in S'_h$ , integrating by parts over each  $K_F \in \mathcal{T}'_h$ , multiplying (2.2) by  $\mathcal{P}_h \mathbf{v}_h \in \mathbf{V}_h^*$  and integrating by parts over each control volume  $K_i^* \in \mathcal{T}_h^*$ , and multiplying (2.3) by  $q_h \in Q_h$  and integrating by parts over each element  $K \in \mathcal{T}_h$ . This gives the following (unstable) semidiscrete Petrov-Galerkin formulation: For  $0 < t \leq T$ , find  $\phi_h(t) \in S_h, \mathbf{u}_h \in \mathbf{V}_h, p_h \in Q_h$  such that

$$\begin{aligned} & (\phi_h(t), s'_h)_{1,\Omega} - \sum_{K \in \mathcal{T}_h} \sum_{K_F \subset K} \int_{\partial K_F} s'_h (\mathbf{F}(\phi_h(t), \mathbf{u}_h) - a(\phi_h(t))) \partial_{\mathbf{n}} \phi_h(t) r \, d\sigma = 0, \\ & - \sum_{i=1}^{N_h} \int_{\partial K_i^*} \mu(\phi_h(t)) \mathbf{v}_h^* \cdot \partial_{\mathbf{n}} \mathbf{u}_h r \, d\sigma - \lambda \sum_{i=1}^{N_h} \int_{\partial K_i^*} p_h \mathbf{v}_h^* \cdot \mathbf{n} r \, d\sigma = (\mathbf{G}(\phi_h(t)), \mathbf{v}_h^*)_{1,\Omega}, \\ & \lambda \sum_{i=1}^{N_h} \mathbf{u}_h(s_i) \int_{\partial K_i^*} q_h \mathbf{n} r \, d\sigma = 0 \quad \text{for all } s'_h \in S'_h, \mathbf{v}_h^* \in \mathbf{V}_h^*, q_h \in Q_h. \end{aligned}$$

To recast this formulation as a Galerkin method where the trial and test spaces coincide, we employ the following lemma.

LEMMA 3.1. *The following equations hold for all  $\mathbf{w}_h, \mathbf{v}_h \in \mathbf{V}_h, q_h \in Q_h$  and  $\xi_h, s_h \in S_h$ :*

$$- \sum_{i=1}^{N_h} \mathbf{v}_h(s_i) \int_{\partial K_i^*} \mu(r, z) \partial_{\mathbf{n}} \mathbf{u}_h r \, d\sigma \tag{3.4}$$

$$= (\mu(r, z) \boldsymbol{\varepsilon}_{\mathbf{a}}(\mathbf{u}_h), \boldsymbol{\varepsilon}_{\mathbf{a}}(\mathbf{v}_h))_{1,\Omega} + (\mu(r, z) u_{h,r}, v_{h,r})_{-1,\Omega},$$

$$\sum_{i=1}^{N_h} \mathbf{v}_h(s_i) \int_{\partial K_i^*} q_h \mathbf{n} r \, d\sigma = (q_h, \nabla_{\mathbf{a}} \cdot \mathbf{v}_h)_{1,\Omega}, \tag{3.5}$$

$$\begin{aligned} & - \sum_{K \in \mathcal{T}_h} \sum_{K_F \subset K} \int_{\partial K_F} \mathcal{R}_h s_h a(\xi_h) \partial_{\mathbf{n}} \xi_h r \, d\sigma \\ & = (a(\xi_h) \nabla_{\mathbf{a}} \xi_h, \nabla_{\mathbf{a}} s_h)_{1,\Omega} + \sum_{F \in \mathcal{E}_h^{int}} (a(\xi_h) \partial_{\mathbf{n}} \xi_h, \mathcal{R}_h s_h - s_h)_{1,F}. \end{aligned} \tag{3.6}$$

*Proof.* For (3.6) it suffices to apply [54, Lemma 2.2] noting that  $\nabla_{\mathbf{a}} \cdot (a(\xi_h) \nabla_{\mathbf{a}} \xi_h)$  vanishes for  $\xi_h \in S_h$ , whereas (3.4) and (3.5) follow as in [45].  $\square$

In light of Lemma 3.1 we conclude that the semidiscrete stabilized FVE approximation of (2.1)–(2.3) (whose solution we will also denote by  $\phi_h, \mathbf{u}_h, p_h$ ), is the solution of the following problem: For  $0 < t \leq T$ , find  $\phi_h(t) \in S_h, \mathbf{u}_h \in \mathbf{V}_h, p_h \in Q_h$  such that

$$\begin{aligned} & \frac{d}{dt} (\phi_h(t), \mathcal{R}_h s_h)_{1,\Omega} + (\mathbf{F}(\phi_h(t), \mathbf{u}_h) - a(\phi_h(t)) \nabla_{\mathbf{a}} \phi_h(t), \nabla_{\mathbf{a}} s_h)_{1,\Omega} \\ & + \sum_{F \in \mathcal{E}_h^{int}} \left( \widehat{\mathbf{F}}(\phi_h(t), \mathbf{u}_h) \cdot \mathbf{n}_F - \{a(\phi_h(t)) \nabla_{\mathbf{a}} \phi_h(t) \cdot \mathbf{n}_F\}_F \right. \\ & \quad \left. + \frac{\kappa_F^\phi}{h_F^2} [\![\mathcal{R}_h \phi_h(t)]\!]_F, [\![\mathcal{R}_h s_h]\!]_F \right)_{1,F} \end{aligned}$$

$$\begin{aligned}
& - \eta \sum_{F \in \mathcal{E}_h^{\text{int}}} \left( \llbracket \phi_h(t) \rrbracket_F, \{a(\phi_h(t)) \nabla_{\mathbf{a}} s_h \cdot \mathbf{n}_F\}_F \right)_{1,F} \\
& - \sum_{F \in \mathcal{E}_h \cap \Gamma_{\text{in}}} \left[ \eta(\phi_{\text{in}}, a(\phi_h(t)) \nabla_{\mathbf{a}} s_h \cdot \mathbf{n}_F)_{1,F} - \left( \frac{\kappa_F^\phi}{h_F^2} \phi_{\text{in}}, \mathcal{R}_h s_h \right)_{1,F} \right] = 0 \quad \forall s_h \in S_h, \\
& (\mu(\phi_h(t)) \varepsilon_{\mathbf{a}}(\mathbf{u}_h), \varepsilon_{\mathbf{a}}(\mathbf{v}_h))_{1,\Omega} + (\mu(\phi_h(t)) u_{h,r}, v_{h,r})_{-1,\Omega} \\
& - \lambda(p_h, \nabla_{\mathbf{a}} \cdot \mathbf{v}_h)_{1,\Omega} - (\mathbf{G}(\phi_h(t)), \mathcal{P}_h \mathbf{v}_h)_{1,\Omega} \\
& + \sum_{F \in \mathcal{E}_h^{\text{int}}} \frac{h_F}{\kappa_F^{\mathbf{u}}} (\llbracket \mu(\phi_h(t)) \varepsilon_{\mathbf{a}}(\mathbf{u}_h) \cdot \mathbf{n}_F \rrbracket_F, \llbracket \mu(\phi_h(t)) \varepsilon_{\mathbf{a}}(\mathbf{v}_h) \cdot \mathbf{n}_F \rrbracket_F)_{1,F} = 0 \quad \forall \mathbf{v}_h \in \mathbf{V}_h, \\
& \lambda(q_h, \nabla_{\mathbf{a}} \cdot \mathbf{u}_h)_{1,\Omega} + \sum_{K \in \mathcal{T}_h} \frac{h_K^2}{\kappa_K^p} (\lambda \nabla_{\mathbf{a}} p_h - \mathbf{G}(\phi_h(t)), \nabla_{\mathbf{a}} q_h)_{1,K} = 0 \quad \forall q_h \in Q_h.
\end{aligned}$$

**3.6. Space-time discrete scheme.** To specify the time discretization, we introduce a variable time step  $\Delta t^n = t^{n+1} - t^n$ , and partition the time interval as  $[0, \dots, t^n, \dots, T]$ . Furthermore, by  $w^n$  we denote the quantity  $w(\cdot, t^n)$ . Then, to advance the solution from  $t^n$  to  $t^{n+1}$  we solve the time discrete problem by the following splitting (or segregating) method (we here consider the incomplete interior penalty method):

1. Given  $\phi_h^n$ , compute  $\mathbf{u}_h^n$  and  $p_h^n$  by solving the Stokes problem

$$\begin{aligned}
& (\mu(\phi_h^n) \varepsilon_{\mathbf{a}}(\mathbf{u}_h^n), \varepsilon_{\mathbf{a}}(\mathbf{v}_h))_{1,\Omega} + (\mu(\phi_h^n) u_{h,r}^n, v_{h,r})_{-1,\Omega} \\
& - \lambda(p_h^n, \nabla_{\mathbf{a}} \cdot \mathbf{v}_h)_{1,\Omega} - (\mathbf{G}(\phi_h^n), \mathcal{P}_h \mathbf{v}_h)_{1,\Omega} \\
& + \sum_{F \in \mathcal{E}_h^{\text{int}}} \frac{h_F}{\kappa_F^{\mathbf{u}}} (\llbracket \mu(\phi_h^n) \varepsilon_{\mathbf{a}}(\mathbf{u}_h^n) \cdot \mathbf{n}_F \rrbracket_F, \llbracket \mu(\phi_h^n) \varepsilon_{\mathbf{a}}(\mathbf{v}_h) \cdot \mathbf{n}_F \rrbracket_F)_{1,F} = 0 \quad \forall \mathbf{v}_h \in \mathbf{V}_h, \\
& \lambda(q_h, \nabla_{\mathbf{a}} \cdot \mathbf{u}_h^n)_{1,\Omega} + \sum_{K \in \mathcal{T}_h} \frac{h_K^2}{\kappa_K^p} (\lambda \nabla_{\mathbf{a}} p_h^n - \mathbf{G}(\phi_h^n), \nabla_{\mathbf{a}} q_h)_{1,K} = 0 \quad \forall q_h \in Q_h.
\end{aligned}$$

2. Given  $\mathbf{u}_h^n$  and  $p_h^n$  computed in Step 1, obtain  $\phi_h^{n+1}$  from the following scheme associated to the parabolic problem

$$\begin{aligned}
& \left( \frac{\phi_h^{n+1} - \phi_h^n}{\Delta t^n}, \mathcal{R}_h s_h \right)_{1,\Omega} + (\mathbf{F}(\phi_h^{n+1}, \mathbf{u}_h^n) - a(\phi_h^n) \nabla_{\mathbf{a}} \phi_h^{n+1}, \nabla_{\mathbf{a}} s_h)_{1,\Omega} \\
& + \sum_{F \in \mathcal{E}_h \cap \Gamma_{\text{in}}} \left( \frac{\kappa_F^\phi}{h_F^2} \phi_{\text{in}}, \mathcal{R}_h s_h \right)_{1,F} \\
& + \sum_{F \in \mathcal{E}_h^{\text{int}}} \left( \widehat{\mathbf{F}}(\phi_h^{n+1}, \mathbf{u}_h^n) \cdot \mathbf{n}_F - \{a(\phi_h^n) \nabla_{\mathbf{a}} \phi_h^{n+1} \cdot \mathbf{n}_F\}_F \right. \\
& \quad \left. + \frac{\kappa_F^\phi}{h_F^2} \llbracket \mathcal{R}_h \phi_h^{n+1} \rrbracket_F, \llbracket \mathcal{R}_h s_h \rrbracket_F \right)_{1,F} = 0 \quad \forall s_h \in S_h.
\end{aligned} \tag{3.7}$$

Computational efficiency is the principal motivation for our procedure to use a segregated solution algorithm to compute  $\phi$ ,  $\mathbf{u}$  and  $p$ . Furthermore, to reduce the complexity of the tangent system needed by Newton's method at every time step (we found that in almost every time step, less than 10 iterations is enough to achieve

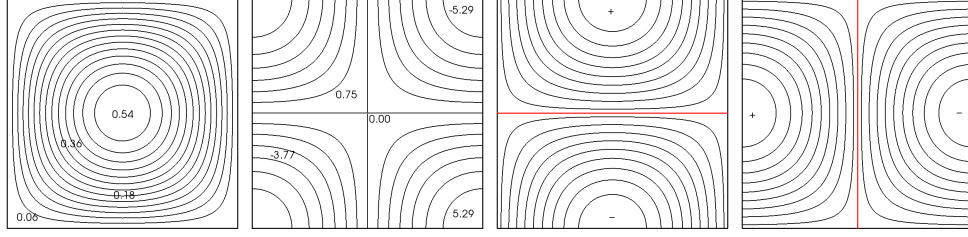


FIG. 4.1. *Example 1: Approximate solutions for concentration, pressure field, and velocity components at time  $t = 1$  obtained with the FVE method. In this case,  $u_{x,h}, u_{y,h} \in [-0.8409, 0.8408]$ ,  $\phi_h \in [0, 0.5401]$ , and  $p_h \in [-5.28685, 5.28685]$ .*

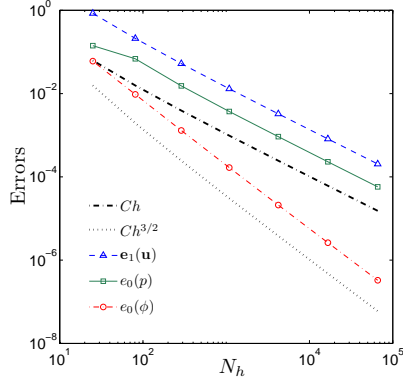


FIG. 4.2. *Example 1: Convergence histories for the FVE method applied to the reduced model problem. The displayed quantities correspond to relative errors as defined in (4.2).*

convergence), the time discretization (3.7) corresponds to a semi-implicit procedure (the terms  $a(\phi_h)$  are taken in the previous time step), and so the nonlinearity is carried only by the term  $\mathbf{F}(\cdot, \mathbf{u}_h^n)$ . We also mention that the first term in the LHS of (3.7) could be replaced by  $\frac{d}{dt}(\phi_h(t), s_h)_{1,\Omega}$  (as is done e.g. in [48] in the context of the transient Stokes equations, with the objective of a classical convergence analysis). Notice that the stabilization terms for  $\mathbf{u}$  and  $\phi$  in the FVE formulation lead to a non-symmetric linear system, which at each time step we solve by means of the unsymmetric multi-frontal direct solver for sparse matrices (UMFPACK).

**4. Numerical results.** We report in this section the results of three numerical tests computed with the proposed formulation. Before solving equations (2.1)–(2.3) for the clarifier-thickener unit, we consider a simple linear model problem (in Cartesian coordinates) with an explicit exact solution in order to test the (spatial) accuracy of the numerical method, and a stationary state test for which we can verify the experimental order of convergence of the axisymmetric discrete formulation.

**4.1. Example 1: A model problem.** For the first example, presented to evaluate the FVE formulation and to validate the implemented code, we define  $\Omega := (-1/2, 1/2)^2$ , and consider the problem of seeking  $\mathbf{u} = (u_1, u_2)^T$ ,  $p$  and  $\phi$  such that

$$\begin{aligned} \partial_t \phi + \nabla \cdot \mathbf{F}(\phi, \mathbf{u}) &= a \Delta \phi, \\ -\mu \Delta \mathbf{u} + \lambda \nabla p &= \mathbf{G}(\phi), \\ \lambda \nabla \cdot \mathbf{u} &= 0, \end{aligned} \tag{4.1}$$



endowed with boundary conditions as follows: slip conditions ( $\mathbf{u} \cdot \mathbf{n} = 0$ ) are applied for  $\mathbf{u}$  on all parts of  $\partial\Omega$ , while for  $\phi$  we prescribe reflecting (zero Neumann) boundary conditions. The time interval is  $t \in [0, 1]$ . The coefficients in (4.1) are chosen as

$$\mathbf{G} = (0, -4\pi^2 \sin(\pi x) \cos(\pi y) \sin t)^T, \quad \mathbf{F}(\phi, \mathbf{u}) = \phi \mathbf{u}, \quad a = \frac{\tan t}{2\pi^2}, \quad \mu = \lambda = 1.$$

This choice leads to the vanishing of the convective term, i.e.,  $\nabla \cdot \mathbf{F}(\phi, \mathbf{u}) = 0$ . The exact solution is

$$\begin{aligned} \phi(x, y, t) &= -\cos(\pi x) \cos(\pi y) \cos t, & p(x, y, t) &= -2\pi \sin(\pi x) \sin(\pi y) \sin t, \\ u_1(x, y, t) &= \cos(\pi x) \sin(\pi y) \sin t, & u_2(x, y, t) &= -\sin(\pi x) \cos(\pi y) \sin t. \end{aligned}$$

The errors to be studied are computed at the final time  $T = 1$  for  $\mathbf{u}$ ,  $p$  and  $\phi$ . The numerical solution is depicted in Figure 4.1. We focus only on the accuracy in space, so we apply the numerical method on several successively refined meshes. Let  $\mathbf{v}_h$  and  $q_h$  denote the FVE approximations of  $\mathbf{v} \in \mathbf{H}^1(\Omega)$  and  $q \in H^1(\Omega)$ , respectively. We define relative errors by

$$\begin{aligned} e_0(\mathbf{v}) &:= \frac{\|\mathbf{v} - \mathbf{v}_h\|_{L^2(\Omega)}}{\|\mathbf{v}\|_{L^2(\Omega)}}, & e_1(\mathbf{v}) &:= \frac{|\mathbf{v} - \mathbf{v}_h|_{H^1(\Omega)}}{|\mathbf{v}|_{H^1(\Omega)}}, \\ e_0(q) &:= \frac{\|q - q_h\|_{L^2(\Omega)}}{\|q\|_{L^2(\Omega)}}, & e_1(q) &:= \frac{|q - q_h|_{H^1(\Omega)}}{|q|_{H^1(\Omega)}}, \end{aligned} \tag{4.2}$$

and let  $r_k(\mathbf{v})$  and  $r_k(q)$  denote the experimental rates of convergence given by

$$r_k(\mathbf{v}) = \frac{\log(e_k(\mathbf{v})/\hat{e}_k(\mathbf{v}))}{\log(h/\hat{h})}, \quad r_k(q) = \frac{\log(e_k(q)/\hat{e}_k(q))}{\log(h/\hat{h})}, \quad k \in \{0, 1\}$$

where  $e_k$  and  $\hat{e}_k$  stand for the corresponding errors obtained for two consecutive meshes of sizes  $h$  and  $\hat{h}$ . Figure 4.2 indicates that the method approximately attains an  $\mathcal{O}(h^{3/2})$  order of convergence for  $\phi$  in  $L^2$ , whereas an  $\mathcal{O}(h)$  order is achieved for  $\mathbf{v}$  in the  $H^1$  seminorm and for  $p$  in  $L^2$ . In the context of Stokes problems, with the chosen FE spaces these rates for  $\mathbf{v}$  and  $p$  are optimal (see e.g. [45]), and the convergence rate for  $\phi$  is also in accordance with previous results for linear problems [7].

Obviously, the regularity of the exact solution, along with the simplification of the model problem (notice that considering the uncoupled transport equation, the flux function is linear) are able to provide these rates, which are not recovered by the FVE approximation of the original problem (2.1)–(2.3).

**4.2. Example 2: A steady-state problem.** As a second example, and to assess the correctness of the axisymmetric scheme, we compute the steady-state solution the Stokes problem (2.2), (2.3) in the domain of interest. A coarse mesh  $\mathcal{T}_h$  and the corresponding dual mesh  $\mathcal{T}_h^*$  are indicated in Figure 4.3 (the diamond mesh  $\mathcal{T}_h'$  is not drawn since is not needed in the actual computations). The dimensions of the clarifier-thickener are in the usual range for center-pie-like settling tanks. In Figure 4.4 we present the numerical solution of the Stokes flow. To obtain approximate convergence rates for the numerical scheme, we compute approximate errors by using as a reference solution (replacing the unavailable exact solution) the numerical approximation obtained on highly refined primal and dual meshes (93223 vertices and

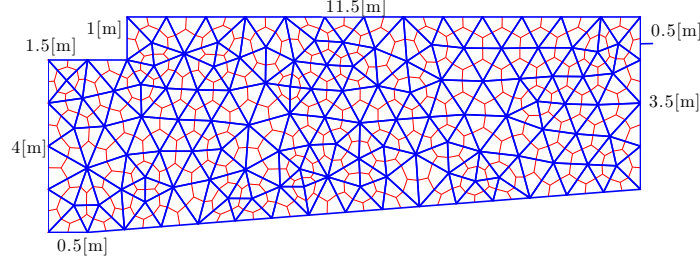


FIG. 4.3. *Examples 2 and 3: Sketch of a coarse primal and dual meshes for a clarifier unit. The inflow, outflow and overflow boundaries  $\Gamma_{\text{in}}$ ,  $\Gamma_{\text{out}}$ ,  $\Gamma_c$  have lengths of 1.5, 0.5 and a 0.5 meters, respectively. All other dimensions are also depicted.*

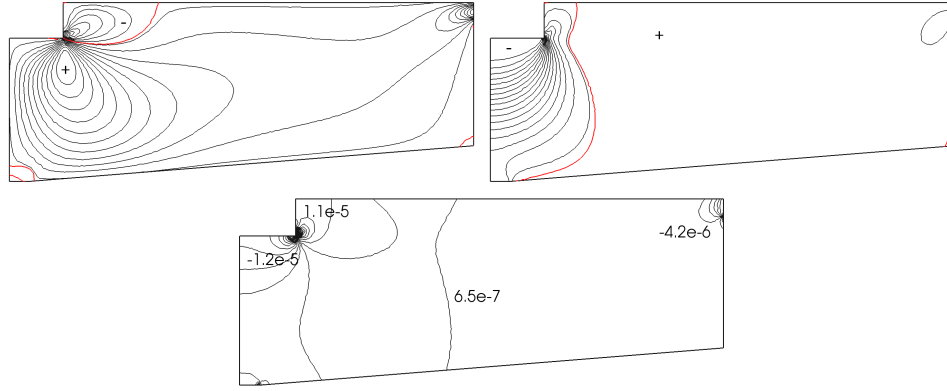


FIG. 4.4. *Example 2: Steady-state solution of problem (2.2)-(2.3). Velocity (top) and pressure field (bottom). In this case,  $u_{r,h} \in [-4.86 \times 10^{-5}, 5.70 \times 10^{-5}]$ ,  $u_{z,h} \in [-1.92 \times 10^{-4}, 2.11 \times 10^{-5}]$ , and  $p_h \in [-2.04 \times 10^{-5}, 2.06 \times 10^{-5}]$ .*

184972 elements in  $\mathcal{T}_h$ ). These errors are computed in the norms associated to the spaces  $\mathbf{V}$  and  $Q$ , that is,

$$e_1^a(\mathbf{v}) := \frac{|\mathbf{v} - \mathbf{v}_h|_{\mathbf{H}_{1,\Gamma_D}^1(\Omega)}}{|\mathbf{v}|_{\mathbf{H}_{1,\Gamma_D}^1(\Omega)}}, \quad e_0^a(q) := \frac{\|q - q_h\|_{L_1^2(\Omega)}}{\|q\|_{L_1^2(\Omega)}},$$

and  $r_1^a(\mathbf{u})$ ,  $r_0^a(p)$  denote the corresponding convergence rates. According to Table 4.1, rates of convergence close to first order are obtained for  $\mathbf{v}$  in the  $\mathbf{V}$ -norm and for  $p$  in the  $Q$ -norm. This behavior is expected for FE approximations of axisymmetric Stokes equations (see [3, Theorem 5]), although the result in [3] (based on some of the regularity assumptions of [5, Sect. IX.1]) is valid for convex domains only.

**4.3. Example 3: A clarifier-thickener simulation.** We now present the numerical solution of (2.1)–(2.3) for the clarifier-thickener unit. From now on, all component velocities are given in [m/s] and pressure in [Pa]. The model and numerical parameters are displayed in Table 4.2. In principle, the stabilization parameters  $\kappa_F^\phi$ ,  $(\kappa_K^p)^{-1}$ , and  $(\kappa_F^u)^{-1}$ , are unfortunately problem-dependent, and should be tuned so that they are as small as possible while still maintaining stability.

The initial datum for  $\phi$  is  $\phi = \phi_{\text{in}}$  at the inlet and  $\phi = 0$  in the rest of the vessel. The boundary conditions are set as follows. The bulk flowrate through

TABLE 4.1

*Example 2: Number of interior nodes in the primal mesh  $N_h$ , approximate errors computed with respect to a FVE solution on a fine mesh, and experimental convergence rates for the steady state problem (2.2)-(2.3).*

$N_h$	$e_1^a(\mathbf{u})$	$r_1^a(\mathbf{u})$	$e_0^a(p)$	$r_0^a(p)$
113	$2.3016 \times 10^{-2}$	—	$6.3122 \times 10^{-3}$	—
403	$1.0348 \times 10^{-2}$	0.9940	$2.8831 \times 10^{-3}$	0.9972
1508	$4.7215 \times 10^{-3}$	0.9762	$1.2914 \times 10^{-3}$	1.0239
6030	$2.0368 \times 10^{-3}$	0.9947	$5.5939 \times 10^{-4}$	0.9673
22931	$8.9410 \times 10^{-4}$	0.9968	$2.3896 \times 10^{-4}$	0.9816

the generic part of the boundary  $\tilde{\Gamma}_i$  (of the three-dimensional domain) is given by  $Q_i = \int_{\tilde{\Gamma}_i} \tilde{\mathbf{u}} \cdot \mathbf{n} d\sigma$ , where in cylindrical coordinates  $\tilde{u}_r = u_r$ ,  $\tilde{u}_z = u_z$  and  $\tilde{u}_\theta = 0$  (see Section 2.2). At the inlet  $\Gamma_{\text{in}}$  we set  $\mathbf{u}_{\text{in}} = (0, -u_{z,\text{in}})^T$  meaning that the vessel is continuously fed with feed suspension of concentration  $\phi_{\text{in}}$ . This gives  $Q_{\text{in}} = -u_{z,\text{in}}|\tilde{\Gamma}_{\text{in}}|$ , where  $|\tilde{\Gamma}_{\text{in}}| = \pi|\Gamma_{\text{in}}|^2 = \frac{9\pi}{4} [\text{m}^2]$  is the area of the inlet boundary  $\tilde{\Gamma}_{\text{in}}$ . At the outlet  $\Gamma_{\text{out}}$  we prescribe  $\mathbf{u}_{\text{out}} = (0, -u_{z,\text{out}})^T$ , which indicates that the concentrated sediment is removed from the unit at a volume underflow rate  $Q_{\text{out}} = u_{z,\text{out}}|\tilde{\Gamma}_{\text{out}}|$ , with  $|\tilde{\Gamma}_{\text{out}}| = \pi|\Gamma_{\text{out}}|^2 = \frac{\pi}{4} [\text{m}^2]$ . On the symmetry axis  $\Gamma_s$  we put  $u_r = 0$ . We impose global conservation of mass by setting

$$Q_{\text{off}} = Q_{\text{out}} - Q_{\text{in}} = u_{z,\text{out}} \frac{\pi}{4} + u_{z,\text{in}} \frac{9\pi}{4},$$

and then, from  $Q_{\text{off}} = u_{r,\text{off}}|\tilde{\Gamma}_{\text{off}}|$  and  $|\tilde{\Gamma}_c| = 2\pi R|\Gamma_c| = 13\pi [\text{m}^2]$ , at the overflow we impose  $\mathbf{u}_{\text{off}} = (u_{r,\text{off}}, 0)^T$ , where

$$u_{r,\text{off}} = \frac{u_{z,\text{out}}|\tilde{\Gamma}_{\text{out}}|}{|\tilde{\Gamma}_c|} + \frac{u_{z,\text{in}}|\tilde{\Gamma}_{\text{in}}|}{|\tilde{\Gamma}_c|} = \frac{9}{52}u_{z,\text{out}} + \frac{1}{52}u_{z,\text{in}}.$$

On the remainder of  $\partial\Omega$  we enforce no-slip condition (homogeneous Dirichlet boundary data for  $\mathbf{u}$ ) and homogeneous Neumann boundary conditions for  $\phi$ . The primal mesh  $\mathcal{T}_h$  used in the experiments consists of 8708 elements and 4516 interior nodes. As time step we use  $\Delta t = 1.0 [\text{s}]$ , which is sufficiently accurate to capture the main phenomena of the problem.

Figure 4.6 shows the velocity fields volume fraction profiles, and Figure 4.7 the corresponding velocity fields, at different times. After  $t = 1000 [\text{s}]$ , the effect of sedimentation is clearly noticed since  $\phi$  increases towards the bottom of the tank. The concentration at the effluent remains equals to zero until  $t = 10 [\text{h}]$ .

In light of Remark 2.1 we perform an analogous simulation with a diffusion function  $A$  that vanishes for  $\phi \leq \phi_c$ . Condition (2.4) is replaced by the choice

$$\sigma'_e(\phi) = \begin{cases} 0 & \text{for } \phi \leq \phi_c, \\ \sigma_0 \frac{\alpha}{\phi_c} \left( \frac{\phi}{\phi_c} \right)^{\alpha-1} & \text{otherwise,} \end{cases} \quad \sigma_0, \alpha > 0, \quad 0 < \phi_c \leq 1.$$

Figure 4.8 presents the concentration profiles and Figure 4.9 the corresponding velocity fields, at four different times. The sedimentation front is now sharper than in the previous example (Example 3a), and the FVE method is still able to resolve it accurately, without changing the discretization parameters.

TABLE 4.2

Examples 3 and 4: List of geometrical data, and model and numerical parameters considered in the simulations.

Quantity	Values
Density difference	$\Delta\rho = 1562 \text{ [kg/m}^3\text{]}$
Size of the unit	
Example 3	Sectional area = $70.5 \text{ [m}^2\text{]}$ (Fig. 4.3)
Example 4	Sectional area = $53.3 \text{ [m}^2\text{]}$
Maximum volume fraction and gel point	$\phi_{\max} = 0.9, \phi_c = 0.1$
Settling velocity in an unbounded medium	$u_\infty = 2.2 \times 10^{-3} \text{ [m/s]}$
Gravity force	$g = 9.81 \text{ [m/s}^2\text{]}$
Prescribed concentration at inlet	$\phi_{\text{in}} = 0.08$
Absolute bulk boundary velocities	$u_{z,\text{out}} = \nu u_{z,\text{in}}, u_{r,\text{off}} = \frac{(9-\nu)}{52} u_{z,\text{in}}$
Example 3	$u_{z,\text{in}} = 2.9 \times 10^{-3} \text{ [m/s]}, \nu = 0$
Example 4	$u_{r,\text{in}} = 1.9 \times 10^{-2} \text{ [m/s]}, \nu = 0.75$
Other model parameters	$\alpha = 5, \beta = 2.5, \lambda = 1, \sigma_0 = 5 \times 10^{-2}$
Meshsize and time step	
Example 3	$h = 0.1428 \text{ [m]}, \Delta t = 1.0 \text{ [s]}$
Example 4	$h = 0.0961 \text{ [m]}, \Delta t = 5.0 \text{ [s]}$
Stabilization parameters	$\kappa_F^\phi = \frac{1}{12}, \kappa_F^u = 100,$
Example 3	$\kappa_K^p = 200$
Example 4	$\kappa_K^p = 500$

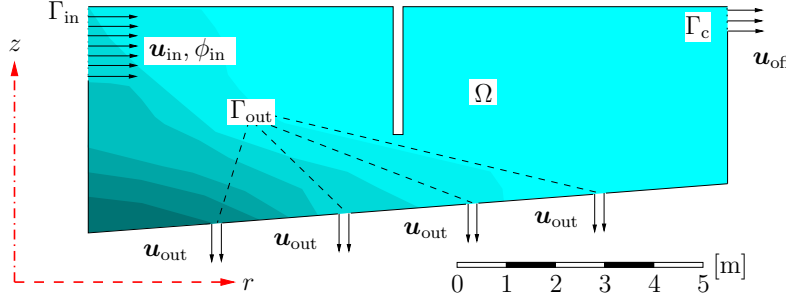


FIG. 4.5. Example 4: secondary settling tank studied in [35, 53] The device has a center feed, peripheral and radial effluent overflows, and a skirt baffle acting as flocculator. For this example, in the bottom of the tank there are four suction lifts for the sludge, of width  $0.25 \text{ [m]}$  each. The unit has a radial length and height of  $13 \text{ [m]}$  and  $4.6 \text{ [m]}$ , respectively, the inlet has a height of  $1.50 \text{ [m]}$ , the baffle has a width of  $0.2 \text{ [m]}$  and a height of  $2.6 \text{ [m]}$ , the effluent outlet has a height of  $0.5 \text{ [m]}$  and the slope of the bottom of the tank is of  $6.5\%$ .

**4.4. Example 4: A secondary settling unit.** As a last example, we consider a slightly different geometry corresponding to a secondary settling tank studied in [35, 53] (see Figure 4.5, where the geometry is also described.) The difference to the clarifier-thickener configuration is that the feed inlet is oriented radially rather than axially; the outlet is associated with four so-called suction lifts rather than a central discharge; and there is a so-called skirt baffle separating the area closer to the inlet from that farther away.

For our simulation all values for the parameters are considered as in Table 4.2. The primal mesh  $\mathcal{T}_h$  is composed by 7410 elements and 4206 interior nodes. The boundary conditions for velocity at the suction lifts are given by  $\mathbf{u} = (0, -u_{z,\text{out}}/4)$ ,

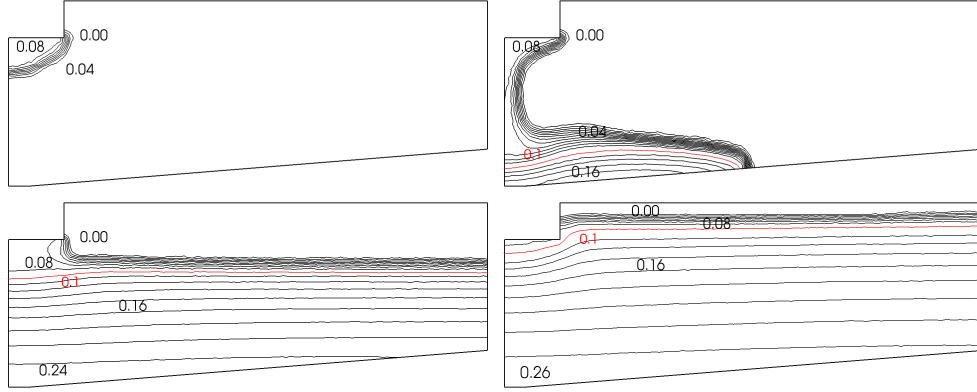


FIG. 4.6. *Example 3a: Snapshots of the numerical solution for the clarifier-thickener problem: concentration profiles at times  $t = 100$ [s] (top left),  $t = 1000$ [s] (top right),  $t = 8000$ [s] (bottom left), and  $t = 30000$ [s] (bottom right). The contours correspond to  $\phi = 0.01, 0.02, \dots, 0.09, 0.1, 0.12, 0.14, \dots, 0.26$ .*

where  $u_{z,\text{out}} = \nu u_{r,\text{in}}$ , with  $\nu = 0.75$ .

The evolution of the concentration fields is depicted in Figure 4.10, where we present profiles corresponding to time instants  $t = 1000, 3000, 7500, 15000$  [s]. We observe from the corresponding velocity profiles, shown in Figure 4.11, that from time  $t = 7500$  [s] the material starts to be extracted at the bottom lifts, which explains the decreasing of the concentration in the bottom.

**5. Concluding remarks.** In the present work, an innovative numerical technique for the solution of a coupled fluid flow and transport problem in a two-dimensional axisymmetric domain has been proposed within the context of sedimentation-consolidation models. It is of practical importance to solve accurately the reduced 2D problem to model the underlying full three-dimensional phenomenon.

The numerical scheme introduced is based on a low order stabilized FVE discretization, where a novel ingredient is the use of two different dual meshes for the velocity and concentration field. We have verified the convergence of the proposed numerical method in simple test cases and we have performed relevant transient simulations on the axisymmetric geometry. Similar problems might be found in several other application fields, and therefore this technique can be, and is currently being, extended to accommodate the study of related and more involved models. We mention that without much effort, a step forward could be made in including, for instance, more general rheological assumptions [38], and the sedimentation of poly-disperse flocculated suspensions [8]. A further issue at the numerical level is the point-wise satisfaction of the divergence free condition. In this regard, a possible improvement to our model could be the formulation of FVE discretizations employing features of the Scott-Vogelius mixed finite elements [13].

**Acknowledgments.** RB acknowledges support by Conicyt (Chile) through Fondecyt project 1090456, BASAL project CMM, Universidad de Chile and Centro de Investigación en Ingeniería Matemática (CI<sup>2</sup>MA). RR acknowledges financial support by the European Research Council through the advanced grant “Mathcard, Mathematical Modelling and Simulation of the Cardiovascular System”, ERC-2008-AdG 227058 and by the postdoctoral grant “Becas Chile”. HT is supported by Mecsup

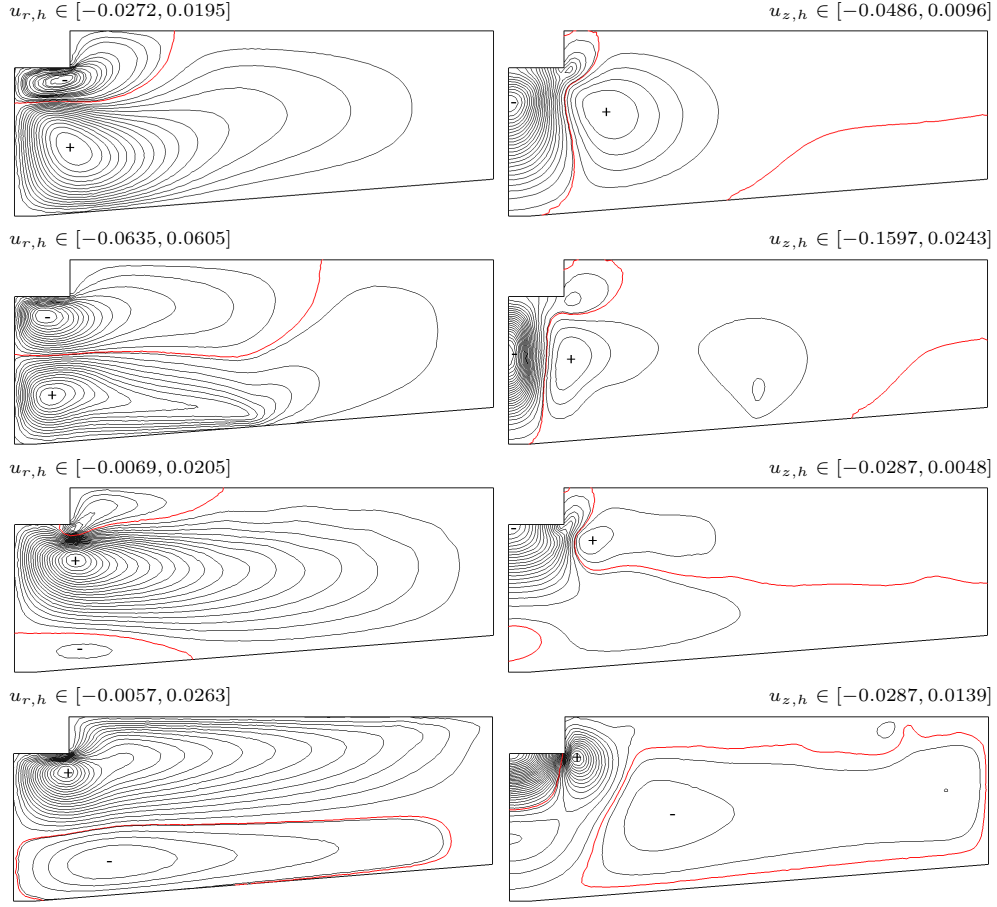


FIG. 4.7. *Example 3a: Snapshots of the numerical solution for the clarifier-thickener problem: Velocity components (radial and height, in left and right columns, respectively) at times  $t = 100[s]$ ,  $t = 1000[s]$ ,  $t = 8000[s]$ , and  $t = 30000[s]$ .*

project UCO0713. This work was initiated while RR was enjoying the hospitality of the Centro de Investigación en Ingeniería Matemática (CI<sup>2</sup>MA), supported by the Fondecyt project 1090456.

#### REFERENCES

- [1] B. ANDREIANOV, F. BOYER AND F. HUBERT, *Discrete duality finite volume schemes for Leray-Lions-type elliptic problems on general 2D meshes*, Numer. Methods PDEs **23**, 145–195 (2007).
- [2] R. ARAYA, G. BARRENECHEA AND F. VALENTIN, *A stabilized finite-element method for the Stokes problem including element and edge residuals*, IMA J. Numer. Anal. **27**, 172–197 (2007).
- [3] Z. BELHACHMI, C. BERNARDI AND S. DEPARIS, *Weighted Clément operator and application to the finite element discretization of the axisymmetric Stokes problem*, Numer. Math. **105**, 217–247 (2006).
- [4] F. BENKHALDOUN, S. SAHMIN AND M. SEAID, *Solution of the sediment transport equations using a finite volume method based on sign matrix*, SIAM J. Sci. Comput. **31**, 2866–2889 (2009).
- [5] C. BERNARDI, M. DAUGE AND Y. MADAY, *Spectral Methods for Axisymmetric Domains*,

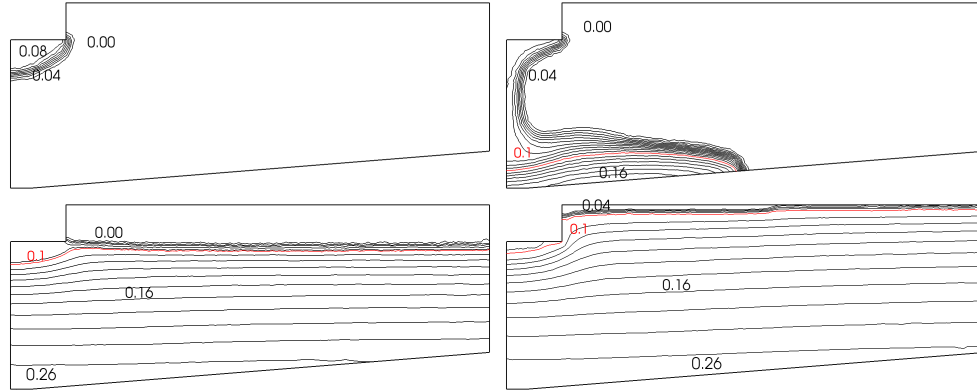


FIG. 4.8. Example 3b: Snapshots of the numerical solution for the clarifier-thickener problem with degenerate diffusion. Concentration profiles at times  $t = 100$  [s] (top left),  $t = 1000$  [s] (top right),  $t = 8000$  [s] (bottom left), and  $t = 30000$  [s] (bottom right). The contours correspond to  $\phi = 0.01, 0.02, \dots, 0.09, 0.1, 0.12, 0.14, \dots, 0.26$ .

- Gauthier-Villars, Éditions Scientifiques et Médicales Elsevier, Paris (1999).
- [6] C. BI AND M. LIU, *A discontinuous finite volume element method for second-order elliptic problems*, Numer. Methods PDEs, to appear (2010).
  - [7] F. BREZZI, L.D. MARINI AND E. SÜLI, *Discontinuous Galerkin methods for first-order hyperbolic problems*, Math. Models Methods Appl. Sci. **14**, 1893-1903 (2004).
  - [8] S. BERRES, R. BÜRGER, K.H. KARLSEN, AND E.M. TORY, *Strongly degenerate parabolic-hyperbolic systems modeling polydisperse sedimentation with compression*, SIAM J. Appl. Math. **64**, 41–80 (2003).
  - [9] R. BÜRGER, K.H. KARLSEN, AND J.D. TOWERS, *A model of continuous sedimentation of flocculated suspensions in clarifier-thickener units*, SIAM J. Appl. Math. **65**, 882–940 (2005).
  - [10] R. BÜRGER, K.H. KARLSEN, H. TORRES AND J.D. TOWERS, *Second order schemes for conservation laws with discontinuous flux modelling clarifier-thickener units*, Numer. Math. **116**, 579–617 (2010).
  - [11] R. BÜRGER, R. RUIZ-BAIER, K. SCHNEIDER AND H. TORRES, *Adaptive multiresolution schemes for two-dimensional sedimentation processes*, Int. J. Numer. Anal. Model., to appear.
  - [12] R. BÜRGER, W.L. WENDLAND AND F. CONCHA, *Model equations for gravitational sedimentation-consolidation processes*, ZAMM Z. Angew. Math. Mech. **80**, 79–92 (2000).
  - [13] E. BURMAN AND A. LINKE, *Stabilized finite element schemes for incompressible flow using Scott-Vogelius elements*, Appl. Numer. Math. **58**, 1704–1719 (2008).
  - [14] E. BURMAN, A. QUARTERONI AND B. STAMM, *Interior penalty continuous and discontinuous finite element approximations of hyperbolic equations*, J. Sci. Comput. **43**, 293–312 (2010).
  - [15] M.C. BUSTOS, F. CONCHA, R. BÜRGER AND E.M. TORY, *Sedimentation and Thickening*, Kluwer Academic Publishers, Dordrecht, 1999.
  - [16] Z. CAI, *On the finite volume element method*, Numer. Math. **58**, 713–735 (1991).
  - [17] C. CALGARO, E. CREUSÉ AND TH. GOUDON, *An hybrid finite volume-finite element method for variable density incompressible flows*, J. Comput. Phys. **227**, 4671–4696 (2008).
  - [18] J.H. CARNEIRO DE ARAUJO AND V. RUAS, *A stable finite element method for the axisymmetric three-field Stokes system*, Comput. Methods Appl. Mech. Engrg. **164**, 267–286 (1998).
  - [19] A. ÇEŞMELİOĞLU AND B. RIVIÈRE, *Primal discontinuous Galerkin methods for time-dependent coupled surface and subsurface flow*, J. Sci. Comput. **40**, 115–140 (2009).
  - [20] C. CHOQUET AND S. ZIMMERMANN, *Analysis of a finite-volume-finite-element scheme for a nuclear transport model*, IMA J. Numer. Anal. **31**, 86–115 (2011).
  - [21] M.A. CHRISTON, P.M. GRESHO AND S.B. SUTTON, *Computational predictability of time-dependent natural convection flows in enclosures (including a benchmark solution)*, Int. J. Numer. Meth. Fluids **40**, 953–980 (2002).
  - [22] S. DIEHL, *Dynamic and steady-state behaviour of continuous sedimentation*, SIAM J. Appl. Math. **57**, 991–1018 (1997).
  - [23] S. DIEHL, *Operating charts for continuous sedimentation IV: Limitations for control of dynamic behaviour*, J. Eng. Math. **60**, 249–264 (2008).

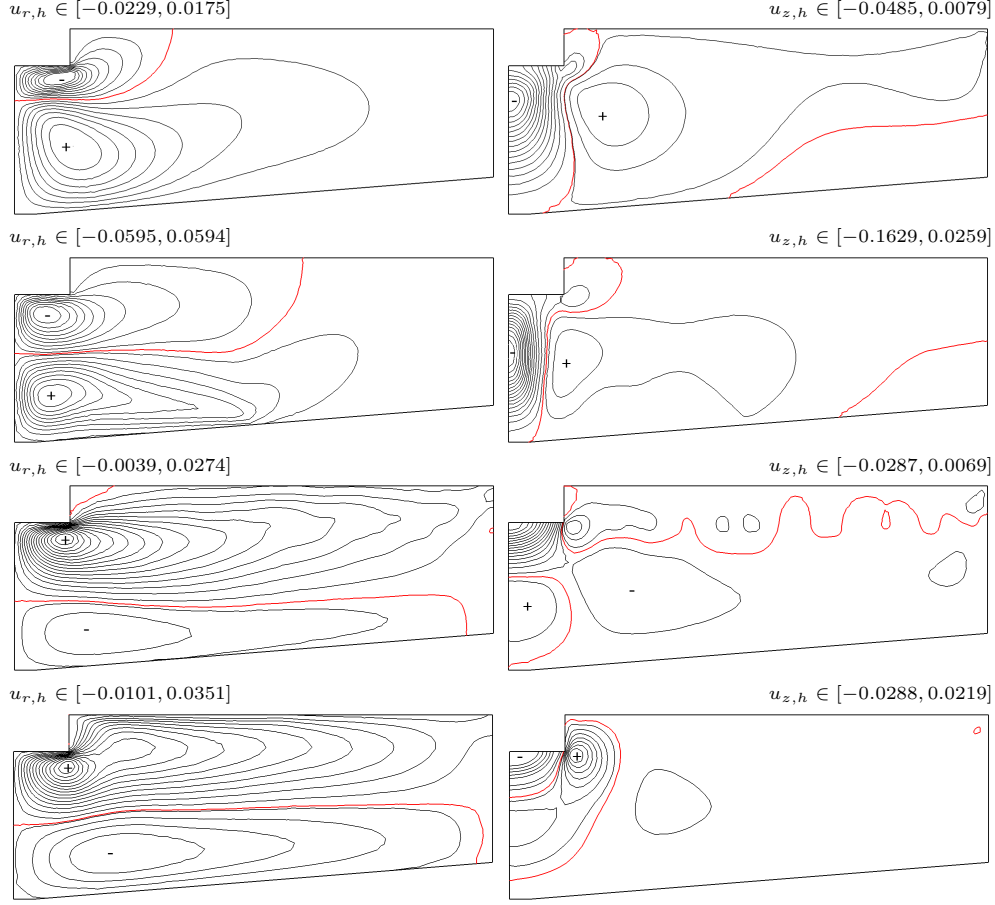


FIG. 4.9. *Example 3b: Snapshot of the numerical solution for the clarifier-thickener problem with degenerate diffusion: velocities at times  $t = 100$  [s],  $t = 1000$  [s],  $t = 8000$  [s], and  $t = 30000$  [s] (from top to bottom).*

- [24] S. DIEHL, *The solids-flux theory — confirmation and extension by using partial differential equations*, Water Res. **42**, 4976–4988 (2008).
- [25] S. DIEHL, *Shock-wave behaviour of sedimentation in wastewater treatment — a rich problem*. In: K. ÅSTRÖM, L.-E. PERSSON AND S.D. SILVESTROV (EDS.), *Analysis for Science, Engineering and Beyond*. Springer-Verlag, New York, 2011.
- [26] Y. EFENDIEV, V. GINTING, T. HOU AND R. EWING, *Accurate multiscale finite element methods for two-phase flow simulations*, J. Comput. Phys. **220**, 155–174 (2006).
- [27] A. ERN, I. MOZOLEVSKI AND L. SCHUH, *Discontinuous Galerkin approximation of two phase flows in heterogeneous porous media with discontinuous capillary pressures*, Comput. Methods Appl. Mech. Engrg. **199**, 1491–1501 (2010).
- [28] M. FLÜCK, T. HOFER, M. PICASSO, J. RAPPAZ AND G. STEINER, *Scientific computing for aluminum production*, Int. J. Numer. Anal. Model. **6**, 489–504 (2009).
- [29] L.P. FRANCA AND F. VALENTIN, *On an improved unusual stabilized finite element method for the advection-reactive-diffusive equation*, Comput. Methods Appl. Mech. Engrg. **190**, 1785–1800 (2001).
- [30] L.P. FRANCA, S.L. FREY AND T. HUGHES, *Stabilized finite element methods. I: Application to advective-diffusive problems*, Comput. Methods Appl. Mech. Engrg. **95**, 253–271 (1992).
- [31] L. GASTALDO, R. HERBIN AND J.-C. LATCHÉ, *An unconditionally stable finite element-finite volume pressure correction scheme for the drift-flux model*, ESAIM: M2AN **44**, 251–287 (2010).



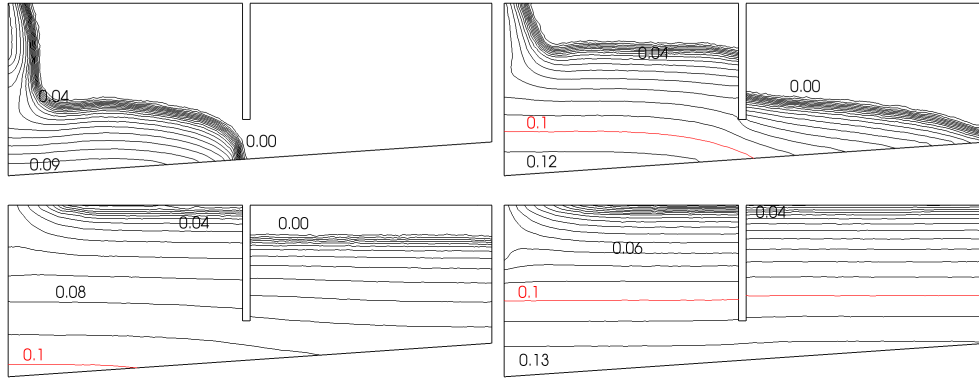


FIG. 4.10. *Example 4: Snapshot of the numerical solution for the clarifier-thickener problem: concentration fields at times  $t = 1000$  [s] (top left),  $t = 3000$  [s] (top right),  $t = 7500$  [s] (bottom left) and  $t = 15000$  [s] (bottom right). The contours correspond to  $\phi = 0.01, 0.02, \dots, 0.11, 0.12, 0.13$ .*

- [32] A. GUARDONE AND L. VIGEVANO, *Finite element/volume solution to axisymmetric conservation laws*, J. Comput. Phys. **224**, 489–518 (2007).
- [33] K. GUSTAVSSON AND J. OPPELSTRUP, *Numerical 2-D models of consolidation of dense flocculated suspensions*, J. Eng. Math. **41**, 189–201 (2001).
- [34] G. JOUVET, M. HUSS, M. PICASSO, J. RAPPAPAZ AND H. BLATTER, *Numerical simulation of Rhone's glacier from 1874 to 2100*, J. Comput. Phys. **228**, 6426–6439 (2009).
- [35] D. KLEINE AND B.D. REDDY, *Finite element analysis of flows in secondary settling tanks*, Int. J. Numer. Meth. Engrg. **64**, 849–876 (2005).
- [36] G.J. KYNCH, *A theory of sedimentation*, Trans. Faraday Soc. **48**, 166–176 (1952).
- [37] O.A. LADYZHENSKAYA, V. SOLONNIKOV AND N. URAL' CEVA, *Linear and quasi-linear equations of parabolic type*, AMS, Providence, RI, 1968.
- [38] D.R. LESTER, M. RUDMAN, AND P.J. SCALES, *Macroscopic dynamics of flocculated colloidal suspensions*, Chem. Eng. Sci. **65**, 6362–6378 (2010).
- [39] B. MERCIER AND G. RAUGEL, *Resolution d'un problème aux limites dans un ouvert axisymétrique par éléments finis en  $r, z$  et séries de Fourier en  $\theta$* , RAIRO, Anal. Numér. **16**, 405–461 (1982).
- [40] S. MCGEE AND P. SESHAIYER, *Finite difference methods for coupled flow interaction transport models*, Electron. J. Differ. Equ. Conf. **17**, 171–184 (2009).
- [41] D.S. MCLACHLAN, *Equation for the conductivity of microscopic mixtures*, J. Phys. C: Solid State Phys. **19**, 1339–1345 (1986).
- [42] A.S. MICHAELS AND J.C. BOLGER, *Settling rates and sediment volumes of flocculated Kaolin suspensions*, Ind. Engrg. Chem. Fund. **1**, 24–33 (1962).
- [43] M.S. NIGAM, *Numerical simulation of buoyant mixture flows*, Int. J. Mult. Flow **29**, 983–1015 (2003).
- [44] K.V. PARCHEVSKY, *Numerical simulation of sedimentation in the presence of 2D compressible convection and reconstruction of the particle-radius distribution function*, J. Engrg. Math. **41**, 203–219 (2001).
- [45] A. QUARTERONI AND R. RUIZ-BAIER, *Analysis of a finite volume element method for the Stokes problem*, Numer. Math., to appear.
- [46] R.R. RAO, L.A. MONDY AND S.A. ALTOBELLI, *Instabilities during batch sedimentation in geometries containing obstacles: A numerical and experimental study*, Int. J. Numer. Meth. Fluids **55**, 723–735 (2007).
- [47] J.N. REDDY AND D.K. GARTLING, *The finite element method in heat transfer and fluid dynamics*, CRC Press, Boca Raton, 2001.
- [48] L. SHEN AND Z. CHEN, *Analysis of a stabilized finite volume method for the transient Stokes equations*, Int. J. Numer. Anal. Model. **6**, 505–519 (2009).
- [49] M. TABATA, *A finite element approximation corresponding to the upwind finite differencing*, Mem. Numer. Math. **4**, 47–63 (1977).
- [50] M. TABATA AND A. SUZUKI, *A stabilized finite element method for the Rayleigh-Bénard equations with infinite Prandtl number in a spherical shell*, Comput. Methods Appl. Mech.

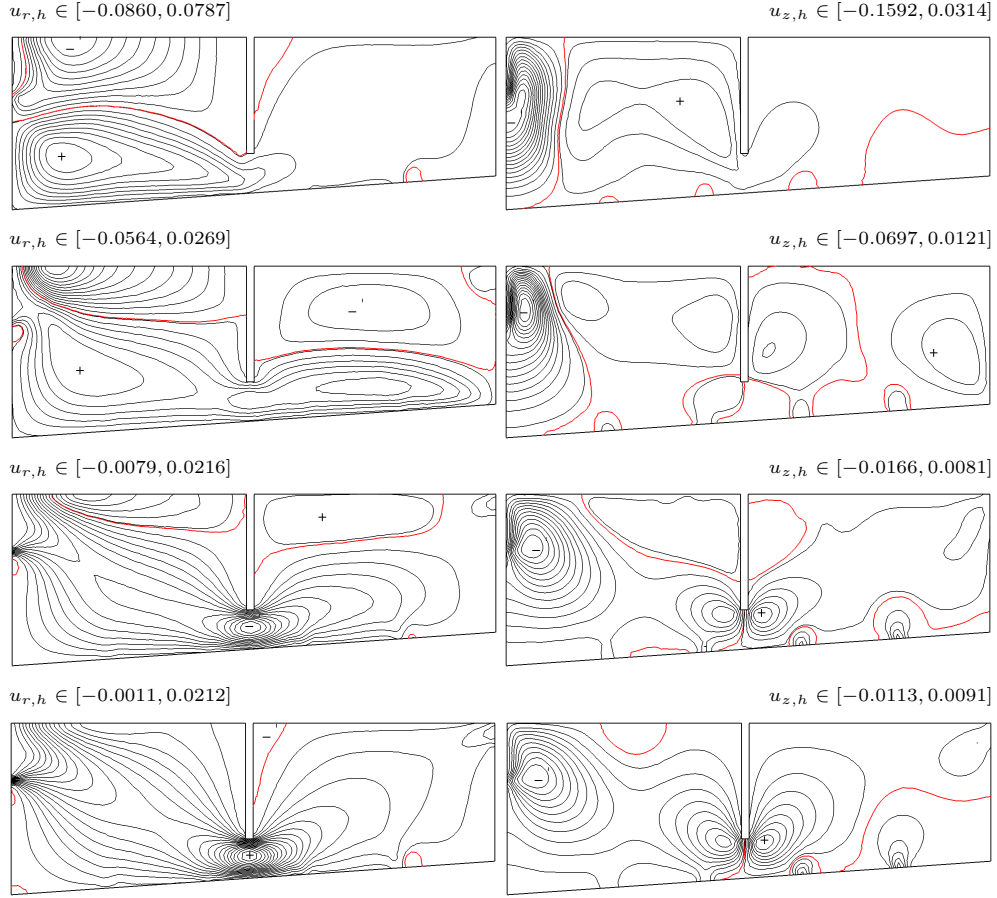


FIG. 4.11. *Example 4: Snapshot of the numerical solution for the clarifier-thickener problem: velocity fields at times  $t = 1000$  [s],  $t = 3000$  [s],  $t = 7500$  [s] and  $t = 15000$  [s] (from top to bottom).*

- Engrg. **190**, 387–402 (2000).
- [51] E.M. TORY (ED.), *Sedimentation of Small Particles in a Viscous Fluid*, Computational Mechanics Publications, Southampton, 1996.
  - [52] M. UNGARISH, *Hydrodynamics of Suspensions*, Springer-Verlag, Berlin, 1993.
  - [53] R.W. WATTS, S.A. SVORONOS AND B. KOOPMAN, *One dimensional modelling of secondary clarifiers using a concentration feed velocity dependent dispersion coefficient*, Water Res. **30**, 2112–2124 (1996).
  - [54] X. YE, *A new discontinuous finite volume method for elliptic problems*, SIAM J. Numer. Anal. **42**, 1062–1072 (2004).

# Centro de Investigación en Ingeniería Matemática (CI<sup>2</sup>MA)

## PRE-PUBLICACIONES 2011

- 2011-04 CARLOS D. ACOSTA, RAIMUND BÜRGER: *Difference schemes stabilized by discrete mollification for degenerate parabolic equations in two space dimensions*
- 2011-05 RODOLFO ARAYA, PABLO VENEGAS: *An a posteriori error estimator for an unsteady advection-diffusion problem*
- 2011-06 EDWIN BEHRENS, JOHNNY GUZMAN: *A mixed method for the biharmonic problem based on a system of first-order equations*
- 2011-07 EDWIN BEHRENS, JOHNNY GUZMAN: *A new family of mixed methods for the Reissner-Mindlin plate model based on a system of first-order equations*
- 2011-08 ALFREDO BERMÚDEZ, RAFAEL MUÑOZ-SOLA, CARLOS REALES, RODOLFO RODRÍGUEZ, PILAR SALGADO: *Mathematical and numerical analysis of a transient eddy current problem arising from electromagnetic forming*
- 2011-09 FABIÁN FLORES-BAZÁN, ELVIRA HERNÁNDEZ: *A unified vector optimization problem: complete scalarizations and applications*
- 2011-10 FABIÁN FLORES-BAZÁN, FERNANDO FLORES-BAZÁN, CRISTIAN VERA: *Gordan-type alternative theorems and vector optimization revisited*
- 2011-11 RODOLFO ARAYA, GABRIEL R. BARRENECHEA, ABNER POZA, FREDERIC VALENTIN: *Convergence analysis of a residual local projection finite element method for the Navier-Stokes equations*
- 2011-12 VERONICA ANAYA, MOSTAFA BENDAHMANE, MAURICIO SEPÚLVEDA: *Numerical analysis for HP food chain system with nonlocal and cross diffusion*
- 2011-13 FABIÁN FLORES-BAZÁN, ANTOINE SOUBEYRAN, DINH THE LUC: *Reference-dependent preferences and theory of change*
- 2011-14 RAIMUND BÜRGER, STEFAN DIEHL, SEBASTIAN FARÅS, INGMAR NOPENS: *Simulation of the secondary settling process with reliable numerical methods*
- 2011-15 RAIMUND BÜRGER, RICARDO RUIZ-BAIER, HECTOR TORRES: *A stabilized finite volume element method for sedimentation-consolidation processes*

Para obtener copias de las Pre-Publicaciones, escribir o llamar a: DIRECTOR, CENTRO DE INVESTIGACIÓN EN INGENIERÍA MATEMÁTICA, UNIVERSIDAD DE CONCEPCIÓN, CASILLA 160-C, CONCEPCIÓN, CHILE, TEL.: 41-2661324, o bien, visitar la página web del centro: <http://www.ci2ma.udec.cl>



**CENTRO DE INVESTIGACIÓN EN  
INGENIERÍA MATEMÁTICA (CI<sup>2</sup>MA)  
Universidad de Concepción**



Casilla 160-C, Concepción, Chile  
Tel.: 56-41-2661324/2661554/2661316  
<http://www.ci2ma.udec.cl>

